



Regional Land and Water Plan
Operative May 2014

Plan Change 1: Schedule 1 and 2 wetland maps with changes to wetland boundaries
– operative 22 October 2020,

including changes to the Lake Kini wetland boundaries KAGP008 a and b on Māori
reserved land– operative 20 July 2021



Plan Change 1: Schedule 1 and 2 wetland maps showing changes to wetland boundaries, excluding the Lake Kini wetlands KAGP008 on Maori-owned land under appeal

Approved by resolution of the West Coast Regional Council on 13 October 2020

Allan Birchfield
Chairman
West Coast Regional Council



Stuart Challenger
Chairman
Resource Management Committee

Operative: 22 October 2020



Plan Change 1 to the Regional Land and Water Plan: Schedule 1 and 2 wetland maps showing changes to the Lake Kini wetland boundaries KAGP008a and b on Māori reserved land

Approved by resolution of the West Coast Regional Council on 13 July 2021



Alan Birchfield

Alan Birchfield
Chairman
West Coast Regional Council



Stuart Challenger

Stuart Challenger
Chairman
Resource Management Committee

Operative: 20 July 2021

Introduction

This document is one of two documents released by the West Coast Regional Council (the Council) as part of making Plan Change 1 to the Regional Land and Water Plan operative.

The other operative document is the Regional Land and Water Plan showing changes from Plan Change 1.

This set of maps is retained as part of the operative Land and Water Plan. The maps show the final extent of the wetland areas as per the Decisions on Plan Change 1, and the resolved Environment Court appeal on the Lake Kini wetland boundaries on Māori reserve land.

If you have any questions on the Plan Change 1 Wetland Boundaries, or wish to obtain a paper copy of this document, or one of the maps, contact Lillie Sadler on 0508 800 118 or email ls@wcrc.govt.nz



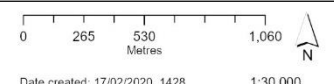
THE WEST COAST REGIONAL COUNCIL

The information displayed has been derived from the West Coast Regional Council's GIS database and maps. It is made available in good faith, but its accuracy or completeness is not guaranteed. Positions of property boundaries are INDICATIVE only and must not be used for legal purposes. Cadastral information sourced from Land Information New Zealand. Crown Copyright Reserved. This map is not to be reproduced without permission of WCRC. © Copyright Reserved West Coast Regional Council.

KAMP001 - Otumahana Estuary (Decisions)



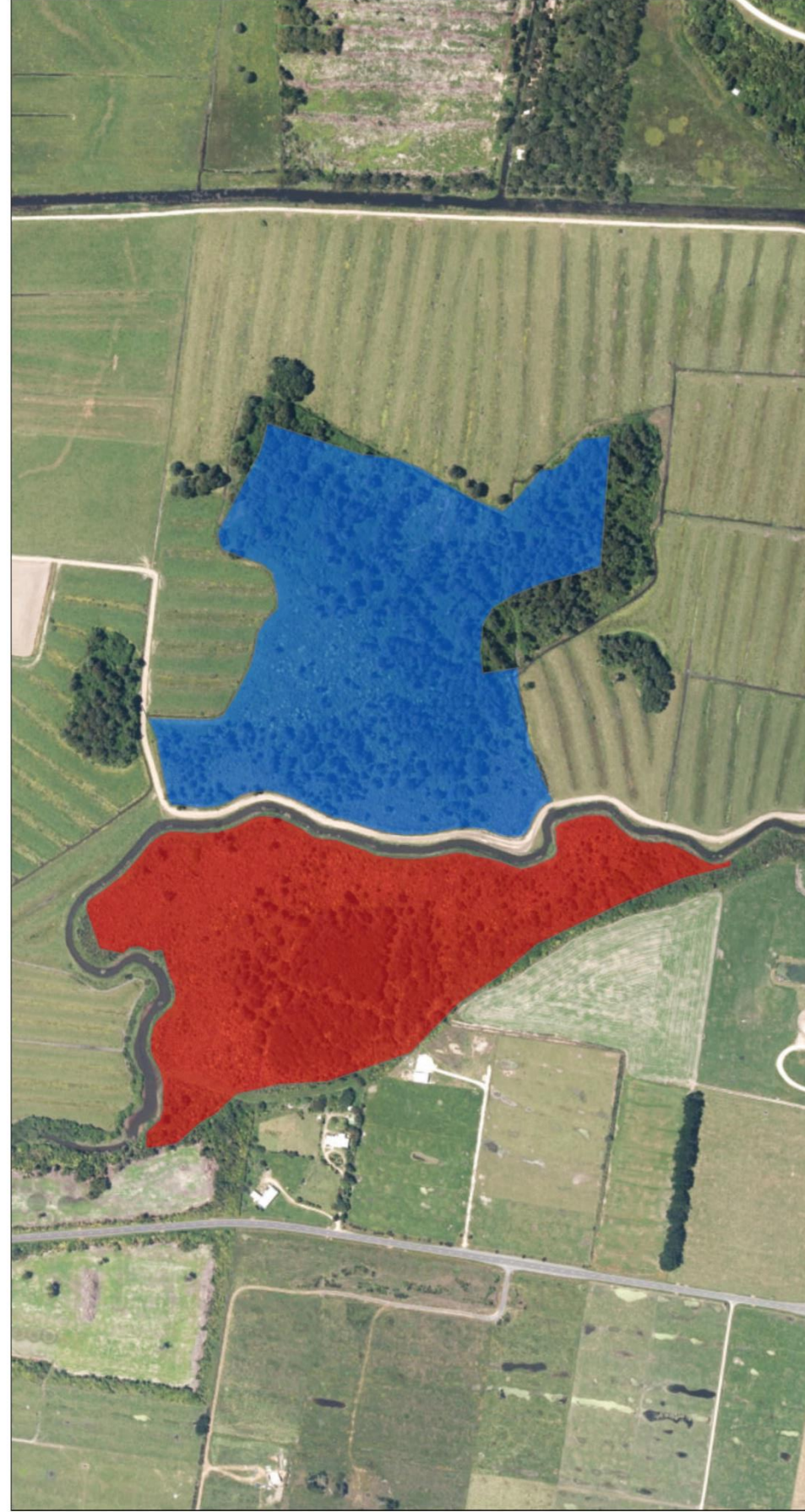
- Legend**
- Schedule 1
 - Schedule 2



Date created: 17/02/2020, 1428
Author: alexc

Sourced from Land Information New Zealand data. Crown copyright reserved.

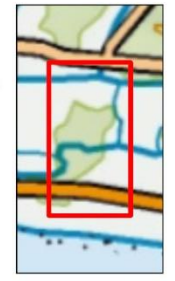
Projection: Transverse Mercator
Datum: NZGD 2000
Units: Meter



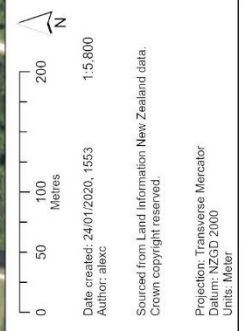
THE WEST COAST REGIONAL COUNCIL

The information displayed has been derived from the West Coast Regional Council's GIS database and maps. It is made available in good faith, but its accuracy or completeness is not guaranteed. Positions of property boundaries are INDICATIVE only and must not be used for legal purposes. Cadastral information sourced from Land Information New Zealand. Crown Copyright Reserved. This map is not to be reproduced without permission of WCRC. © Copyright Reserved West Coast Regional Council.

KAMP002a - KONGAHU Swamp North (Decisions)



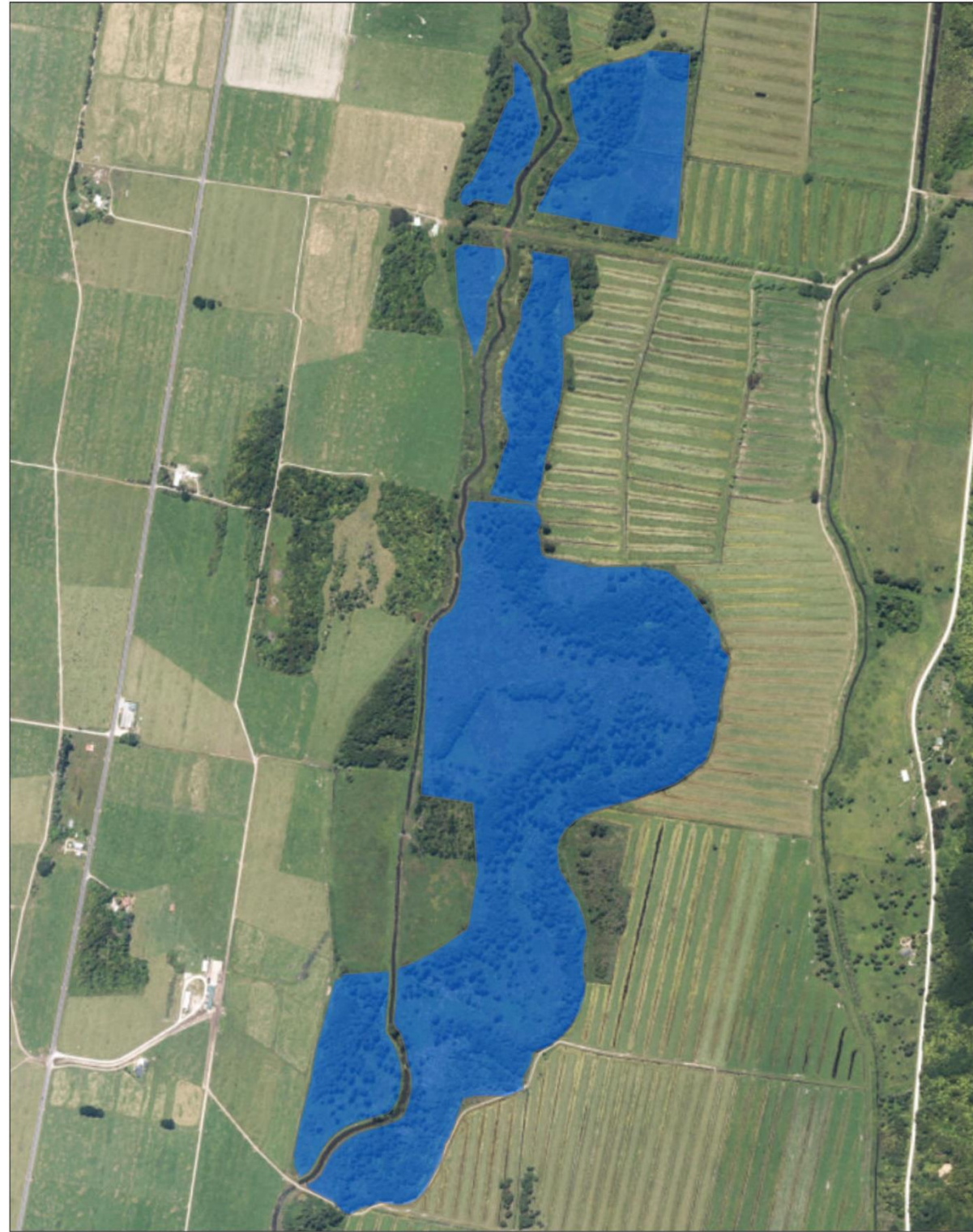
- Legend**
- SCHEDULE**
- Schedule 1
 - Schedule 2




Date created: 24/01/2020, 1553
Author: alexc

Sourced from Land Information New Zealand data. Crown copyright reserved.

Projection: Transverse Mercator
Datum: NZGD 2000
Units: Meter





**THE WEST COAST
REGIONAL COUNCIL**


The information displayed has been derived from the West Coast Regional Council's GIS database and maps. It is made available in good faith, but its accuracy or completeness is not guaranteed. Positions of property boundaries are INDICATIVE only and must not be used for legal purposes. Cadastral information sourced from Land Information New Zealand. Crown Copyright Reserved. This map is not to be reproduced without permission of WCRC. © Copyright Reserved West Coast Regional Council.

**KAMP002b - Kongahu Swamp
(Decisions)**



Legend

- Schedule 1
- Schedule 2




0 80 160 320
Metres

Date created: 08/05/2020, 1623
Author: alexc
1:9,000

Sourced from Land Information New Zealand data. Crown copyright reserved.

Projection: Transverse Mercator
Datum: NZGD 2000
Units: Meter



**THE WEST COAST
REGIONAL COUNCIL**

The information displayed has been derived from the West Coast Regional Council's GIS database and maps. It is made available in good faith, but its accuracy or completeness is not guaranteed. Positions of property boundaries are INDICATIVE only and must not be used for legal purposes. Cadastral information sourced from Land Information New Zealand. Crown Copyright Reserved. This map is not to be reproduced without permission of WCRC. © Copyright Reserved West Coast Regional Council.

**KAMP005 - Oparara Lagoon
(Decisions)**



Legend

- Schedule 1
- Schedule 2



0 135 270 540
Metres

Date created: 17/02/2020, 1428
Author: alexc
1:14,800

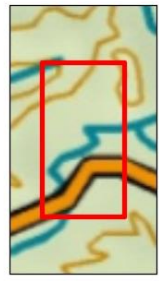
Sourced from Land Information New Zealand data. Crown copyright reserved.

Projection: Transverse Mercator
Datum: NZGD 2000
Units: Meter



THE WEST COAST REGIONAL COUNCIL
 The information displayed has been derived from the West Coast Regional Council's GIS database and maps. It is made available in good faith, but its accuracy or completeness is not guaranteed. Positions of property boundaries are INDICATIVE only and must not be used for legal purposes. Cadastral information sourced from Land Information New Zealand. Crown Copyright Reserved. This map is not to be reproduced without permission of WCRC.
 © Copyright Reserved West Coast Regional Council.

KAMP053 - Tidal Creek (Decisions)



- Legend
- Schedule 1
 - Schedule 2

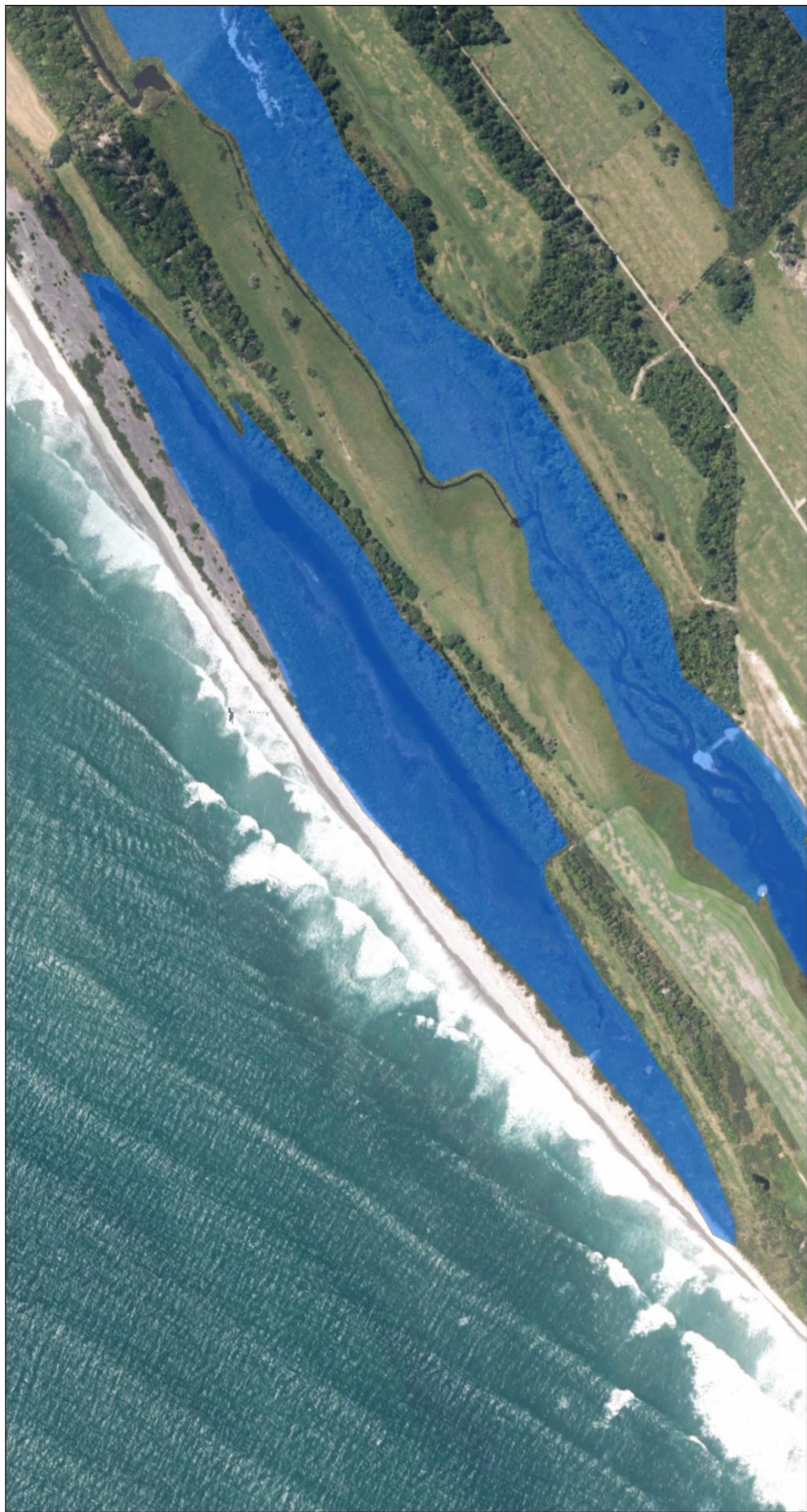
0 40 80 160
 Metres

Date created: 21/01/2020, 1448
 Author: alexc

1:4,800

Sourced from Land Information New Zealand data.
 Crown copyright reserved.

Projection: Transverse Mercator
 Datum: NZGD 2000
 Units: Metre



THE WEST COAST REGIONAL COUNCIL
 The information displayed has been derived from the West Coast Regional Council's GIS database and maps. It is made available in good faith, but its accuracy or completeness is not guaranteed. Positions of property boundaries are INDICATIVE only and must not be used for legal purposes. Cadastral information sourced from Land Information New Zealand. Crown Copyright Reserved. This map is not to be reproduced without permission of WCRC.
 © Copyright Reserved West Coast Regional Council.

FOUP002 - Birchfield Lagoon (Decisions)



- Legend
- Schedule 1
 - Schedule 2

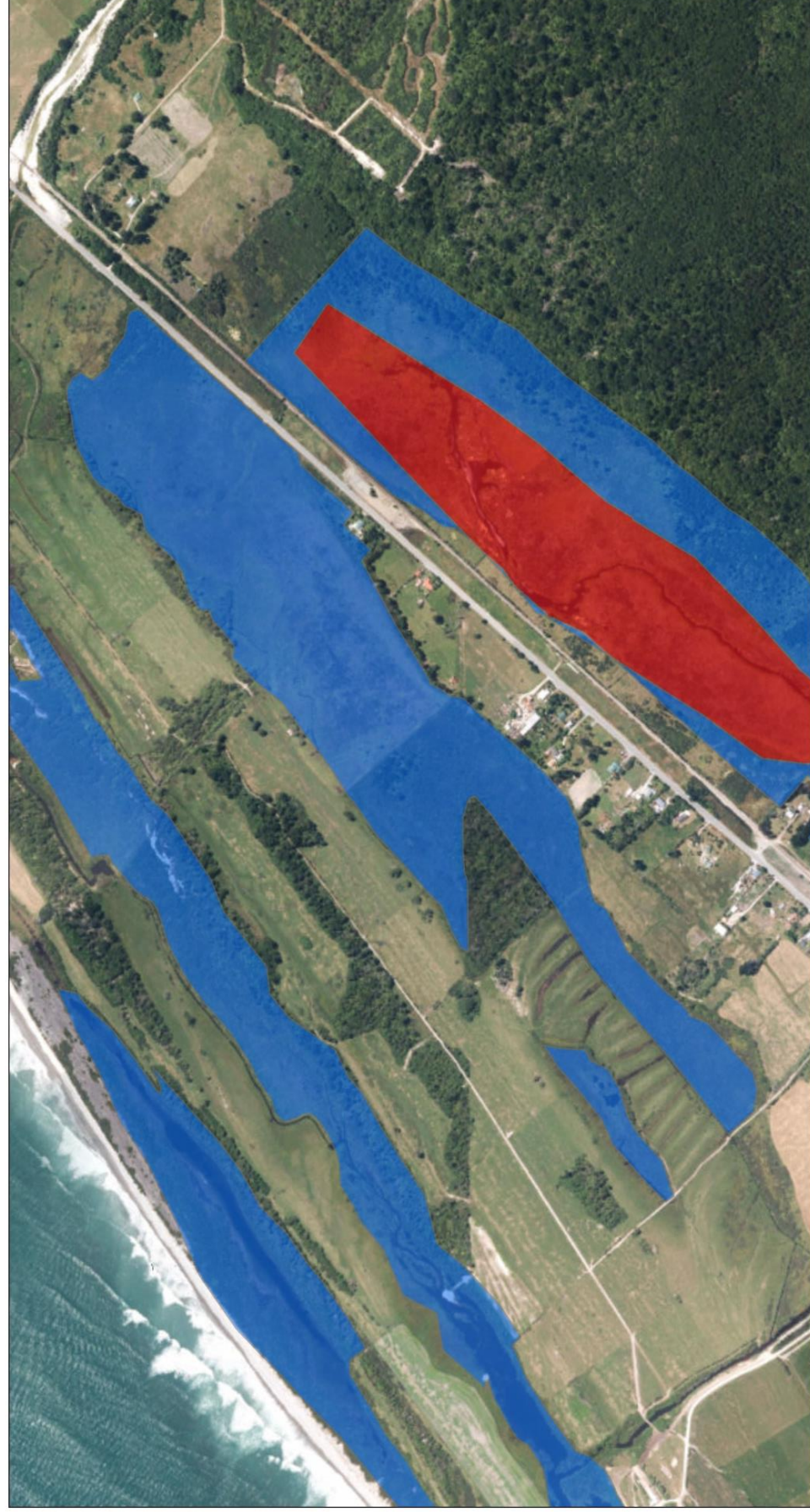
0 55 110 220
 Metres

Date created: 21/01/2020, 1448
 Author: alexc

1:6,000

Sourced from Land Information New Zealand data.
 Crown copyright reserved.

Projection: Transverse Mercator
 Datum: NZGD 2000
 Units: Metre



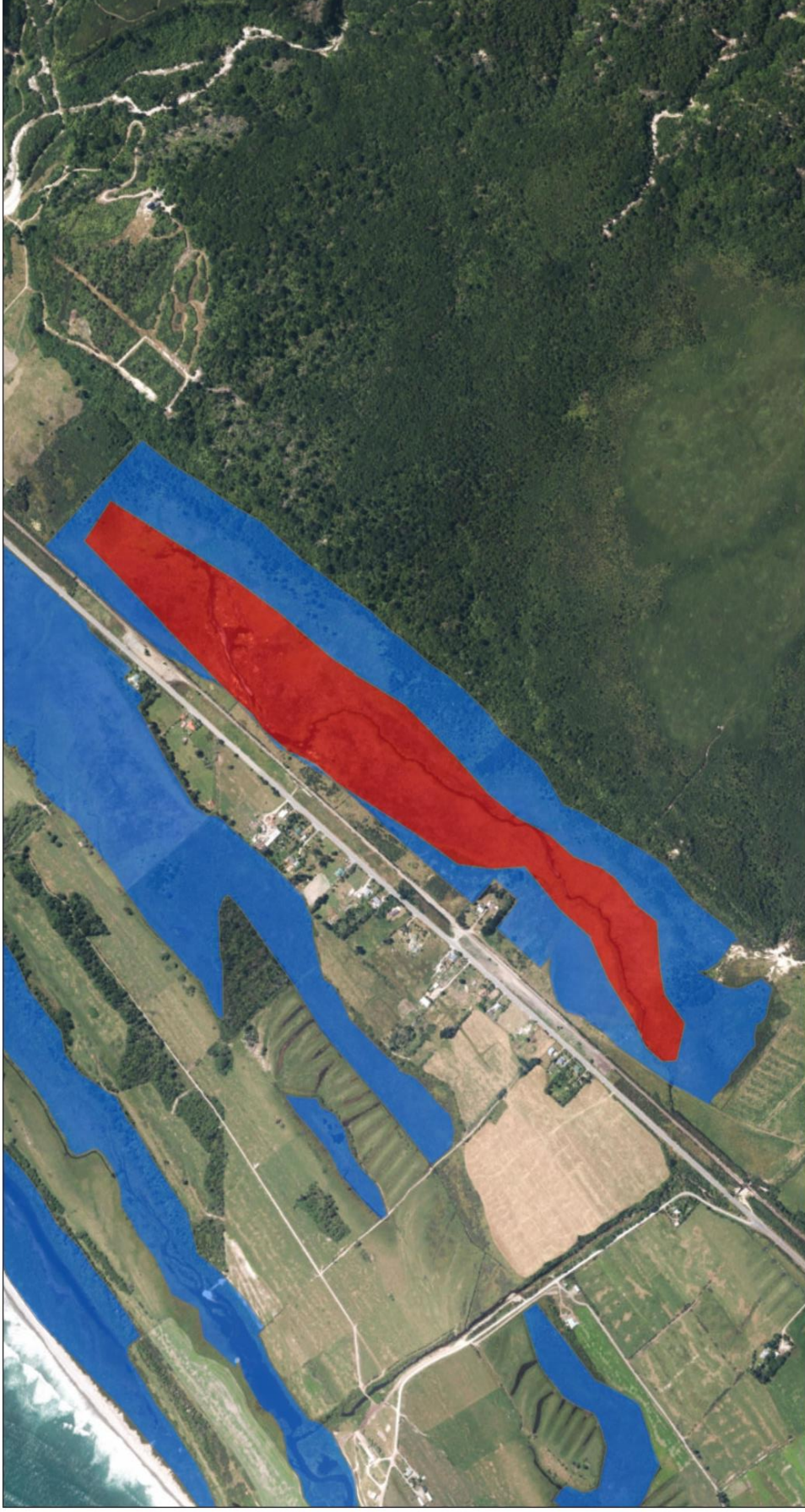
THE WEST COAST REGIONAL COUNCIL
 The information displayed has been derived from the West Coast Regional Council's GIS database and maps. It is made available in good faith, but its accuracy or completeness is not guaranteed. Positions of property boundaries are INDICATIVE only and must not be used for legal purposes. Cadastral information sourced from Land Information New Zealand. Crown Copyright Reserved. This map is not to be reproduced without permission of WCRC. © Copyright Reserved West Coast Regional Council.

FOUPO03 - Birchfield Kuneoteraki Wildlife Management Reserve (Decisions)



- Legend
- Schedule 1
 - Schedule 2

0 87.5 175 350
 Metres
 Date created: 21/01/2020, 1448
 Author: alexc
 Sourced from Land Information New Zealand data. Crown copyright reserved.
 Projection: Transverse Mercator
 Datum: NZGD 2000
 Units: Metre



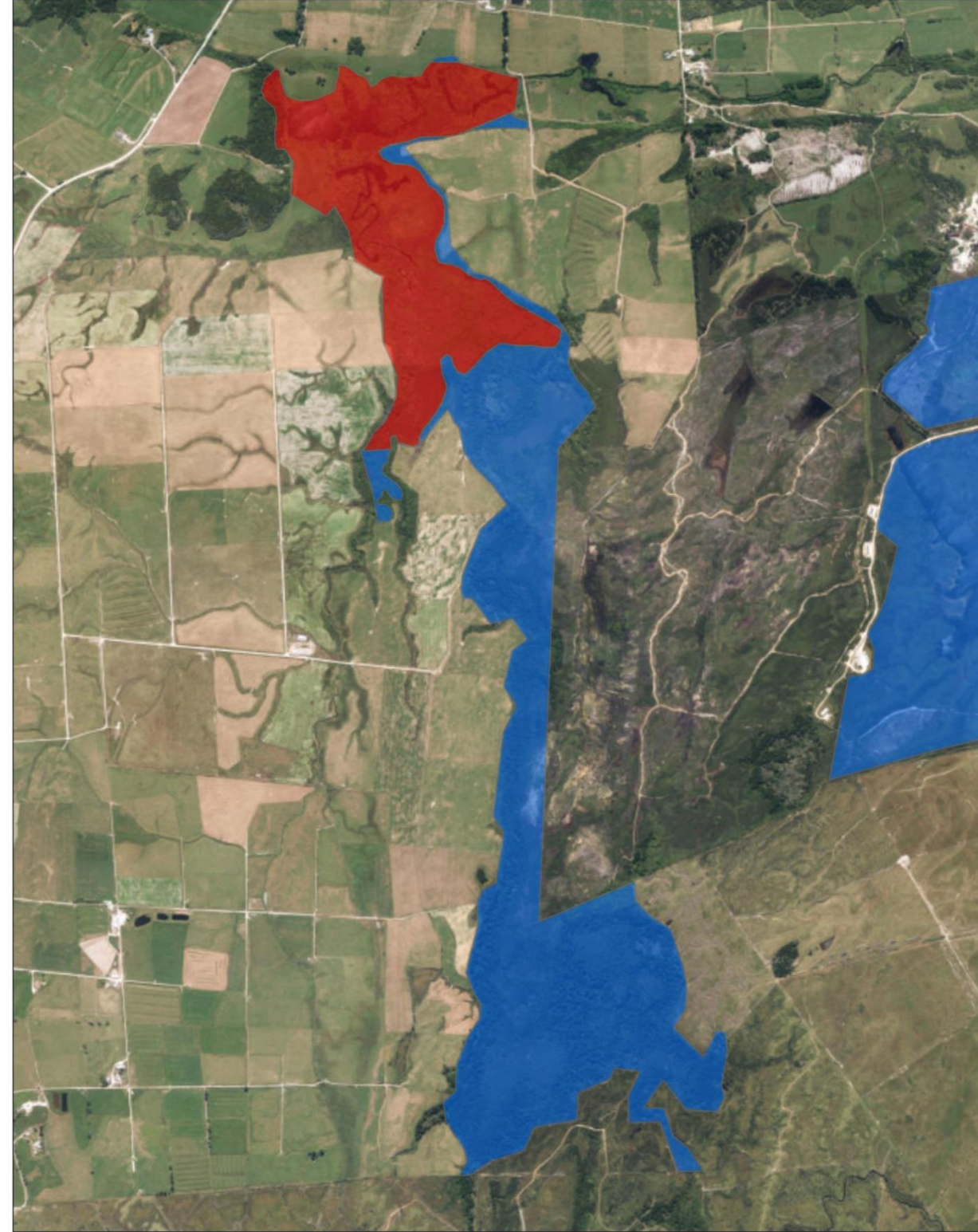
THE WEST COAST REGIONAL COUNCIL
 The information displayed has been derived from the West Coast Regional Council's GIS database and maps. It is made available in good faith, but its accuracy or completeness is not guaranteed. Positions of property boundaries are INDICATIVE only and must not be used for legal purposes. Cadastral information sourced from Land Information New Zealand. Crown Copyright Reserved. This map is not to be reproduced without permission of WCRC. © Copyright Reserved West Coast Regional Council.

FOUPO04 - Birchfield swamp (Eastern part of this wetland complex) (Decisions)



- Legend
- Schedule 1
 - Schedule 2

0 110 220 440
 Metres
 Date created: 21/01/2020, 1448
 Author: alexc
 Sourced from Land Information New Zealand data. Crown copyright reserved.
 Projection: Transverse Mercator
 Datum: NZGD 2000
 Units: Metre



THE WEST COAST REGIONAL COUNCIL

FOUP005 - Gillows Pakihi (Decisions)

The information displayed has been derived from the West Coast Regional Council's GIS database and maps. It is made available in good faith, but its accuracy or completeness is not guaranteed. Positions of property boundaries are INDICATIVE only and must not be used for legal purposes. Cadastral information sourced from Land Information New Zealand. Crown Copyright Reserved. This map is not to be reproduced without permission of WRCRC. © Copyright Reserved West Coast Regional Council.

Legend

- Schedule 1
- Schedule 2

Date created: 17/02/2020, 1428
Author: alexc
1:15,000

Sourced from Land Information New Zealand data. Crown copyright reserved.

Projection: Transverse Mercator
Datum: NZGD 2000
Units: Meter

THE WEST COAST REGIONAL COUNCIL

FOUP006 - Bradshaws Lagoon (Decisions)

The information displayed has been derived from the West Coast Regional Council's GIS database and maps. It is made available in good faith, but its accuracy or completeness is not guaranteed. Positions of property boundaries are INDICATIVE only and must not be used for legal purposes. Cadastral information sourced from Land Information New Zealand. Crown Copyright Reserved. This map is not to be reproduced without permission of WRCRC. © Copyright Reserved West Coast Regional Council.

Legend

- Schedule 1
- Schedule 2

Date created: 24/01/2020, 1553
Author: alexc
1:18,492

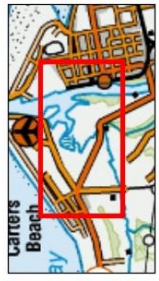
Sourced from Land Information New Zealand data. Crown copyright reserved.

Projection: Transverse Mercator
Datum: NZGD 2000
Units: Meter



THE WEST COAST REGIONAL COUNCIL
 The information displayed has been derived from the West Coast Regional Council's GIS database and maps. It is made available in good faith, but its accuracy or completeness is not guaranteed. Positions of property boundaries are INDICATIVE only and must not be used for legal purposes. Cadastral information sourced from Land Information New Zealand. Crown Copyright Reserved. This map is not to be reproduced without permission of WCRC. © Copyright Reserved West Coast Regional Council.

FOUP007 - Buller River Mouth Saltmarsh (Decisions)



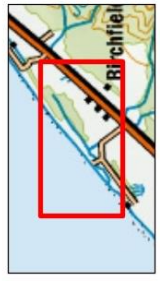
- Legend
- Schedule 1
 - Schedule 2

0 130 260 520 Metres
 1:14,400
 Date created: 21/01/2020, 1448
 Author: alexc
 Sourced from Land Information New Zealand data. Crown copyright reserved.
 Projection: Transverse Mercator
 Datum: NZGD 2000
 Units: Metre



THE WEST COAST REGIONAL COUNCIL
 The information displayed has been derived from the West Coast Regional Council's GIS database and maps. It is made available in good faith, but its accuracy or completeness is not guaranteed. Positions of property boundaries are INDICATIVE only and must not be used for legal purposes. Cadastral information sourced from Land Information New Zealand. Crown Copyright Reserved. This map is not to be reproduced without permission of WCRC. © Copyright Reserved West Coast Regional Council.

FOUP008 - Jones Creek Lagoon (Decisions)



- Legend
- Schedule 1
 - Schedule 2

0 120 240 480 Metres
 1:13,200
 Date created: 21/01/2020, 1448
 Author: alexc
 Sourced from Land Information New Zealand data. Crown copyright reserved.
 Projection: Transverse Mercator
 Datum: NZGD 2000
 Units: Metre



THE WEST COAST REGIONAL COUNCIL

The information displayed has been derived from the West Coast Regional Council's GIS database and maps. It is made available in good faith, but its accuracy or completeness is not guaranteed. Positions of property boundaries are INDICATIVE only and must not be used for legal purposes. Cadastral information sourced from Land Information New Zealand. Crown Copyright Reserved. This map is not to be reproduced without permission of WCRC. © Copyright Reserved West Coast Regional Council.

FOUP009 - Waimangaroa Swamp (also known as Fairdown Swamp) (Decisions)



- Legend
- Schedule 1
 - Schedule 2

0 140 280 560
Metres

Date created: 21/01/2020, 1448
Author: alexc

Sourced from Land Information New Zealand data.
Crown copyright reserved.

Projection: Transverse Mercator
Datum: NZGD 2000
Units: Metre



THE WEST COAST REGIONAL COUNCIL

The information displayed has been derived from the West Coast Regional Council's GIS database and maps. It is made available in good faith, but its accuracy or completeness is not guaranteed. Positions of property boundaries are INDICATIVE only and must not be used for legal purposes. Cadastral information sourced from Land Information New Zealand. Crown Copyright Reserved. This map is not to be reproduced without permission of WCRC. © Copyright Reserved West Coast Regional Council.

FOUP011 - Granity wetland (Decisions)



- Legend
- Schedule 1
 - Schedule 2

0 185 370 740
Metres

Date created: 21/01/2020, 1448
Author: alexc

Sourced from Land Information New Zealand data.
Crown copyright reserved.

Projection: Transverse Mercator
Datum: NZGD 2000
Units: Metre



THE WEST COAST REGIONAL COUNCIL
 The information displayed has been derived from the West Coast Regional Council's GIS database and maps. It is made available in good faith, but its accuracy or completeness is not guaranteed. Positions of property boundaries are INDICATIVE only and must not be used for legal purposes. Cadastral information sourced from Land Information New Zealand. Crown Copyright Reserved. This map is not to be reproduced without permission of WCRC.
 © Copyright Reserved West Coast Regional Council.

FOUP012 - Jones Creek Swamp (Decisions)

Legend
■ Schedule 1
■ Schedule 2



0 110 220 440
 Metres
 Date created: 21/01/2020, 1448
 Author: alexc
 Sourced from: Land Information New Zealand data.
 Crown copyright reserved.
 Projection: Transverse Mercator
 Datum: NZGD 2000
 Units: Metre



THE WEST COAST REGIONAL COUNCIL
 The information displayed has been derived from the West Coast Regional Council's GIS database and maps. It is made available in good faith, but its accuracy or completeness is not guaranteed. Positions of property boundaries are INDICATIVE only and must not be used for legal purposes. Cadastral information sourced from Land Information New Zealand. Crown Copyright Reserved. This map is not to be reproduced without permission of WCRC.
 © Copyright Reserved West Coast Regional Council.

FOUP014 - Okari Lagoon (Decisions)

Legend
■ Schedule 1
■ Schedule 2

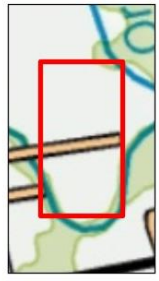


0 130 260 520
 Metres
 Date created: 21/01/2020, 1448
 Author: alexc
 Sourced from: Land Information New Zealand data.
 Crown copyright reserved.
 Projection: Transverse Mercator
 Datum: NZGD 2000
 Units: Metre



THE WEST COAST REGIONAL COUNCIL
 The information displayed has been derived from the West Coast Regional Council's GIS database and maps. It is made available in good faith, but its accuracy or completeness is not guaranteed. Positions of property boundaries are INDICATIVE only and must not be used for legal purposes. Cadastral information sourced from Land Information New Zealand. Crown Copyright Reserved. This map is not to be reproduced without permission of WCRC.
 © Copyright Reserved West Coast Regional Council.

FOUP016 - South Westport (Decisions)



- Legend
- Schedule 1
 - Schedule 2

0 55 110 220
 Metres

Date created: 21/01/2020, 1448
 Author: alexc

Sourced from Land Information New Zealand data.
 Crown copyright reserved.

Projection: Transverse Mercator
 Datum: NZGD 2000
 Units: Metre



THE WEST COAST REGIONAL COUNCIL
 The information displayed has been derived from the West Coast Regional Council's GIS database and maps. It is made available in good faith, but its accuracy or completeness is not guaranteed. Positions of property boundaries are INDICATIVE only and must not be used for legal purposes. Cadastral information sourced from Land Information New Zealand. Crown Copyright Reserved. This map is not to be reproduced without permission of WCRC.
 © Copyright Reserved West Coast Regional Council.

FOUP023 - Caledonian Terrace (Decisions)



- Legend
- Schedule 1
 - Schedule 2

0 110 220 440
 Metres

Date created: 21/01/2020, 1448
 Author: alexc

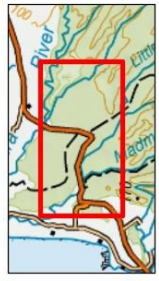
Sourced from Land Information New Zealand data.
 Crown copyright reserved.

Projection: Transverse Mercator
 Datum: NZGD 2000
 Units: Metre



THE WEST COAST REGIONAL COUNCIL
 The information displayed has been derived from the West Coast Regional Council's GIS database and maps. It is made available in good faith, but its accuracy or completeness is not guaranteed. Positions of property boundaries are INDICATIVE only and must not be used for legal purposes. Cadastral information sourced from Land Information New Zealand. Crown Copyright Reserved. This map is not to be reproduced without permission of WCRC.
 © Copyright Reserved West Coast Regional Council.

FOUP024 - Costello Hill Pakihi (Decisions)



- Legend
- Schedule 1
 - Schedule 2

0 162.5 325 650 Metres
 Date created: 21/01/2020, 1448
 Author: alexc
 Sourced from Land Information New Zealand data. Crown copyright reserved.
 Projection: Transverse Mercator
 Datum: NZGD 2000
 Units: Metre



THE WEST COAST REGIONAL COUNCIL
 The information displayed has been derived from the West Coast Regional Council's GIS database and maps. It is made available in good faith, but its accuracy or completeness is not guaranteed. Positions of property boundaries are INDICATIVE only and must not be used for legal purposes. Cadastral information sourced from Land Information New Zealand. Crown Copyright Reserved. This map is not to be reproduced without permission of WCRC.
 © Copyright Reserved West Coast Regional Council.

FOUP026 - Bassett's swamp (Decisions)



- Legend
- Schedule 1
 - Schedule 2

0 55 110 220 Metres
 Date created: 21/01/2020, 1448
 Author: alexc
 Sourced from Land Information New Zealand data. Crown copyright reserved.
 Projection: Transverse Mercator
 Datum: NZGD 2000
 Units: Metre



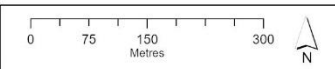
THE WEST COAST REGIONAL COUNCIL

The information displayed has been derived from the West Coast Regional Council's GIS database and maps. It is made available in good faith, but its accuracy or completeness is not guaranteed. Positions of property boundaries are INDICATIVE only and must not be used for legal purposes. Cadastral information sourced from Land Information New Zealand. Crown Copyright Reserved. This map is not to be reproduced without permission of WRCRC. © Copyright Reserved West Coast Regional Council.

FOUP029 - Silverstream (Decisions)



- Legend**
- Schedule 1
 - Schedule 2



Date created: 24/01/2020, 1553 1:8,576
Author: alexc

Sourced from Land Information New Zealand data. Crown copyright reserved.

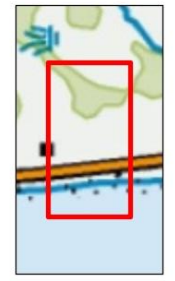
Projection: Transverse Mercator
Datum: NZGD 2000
Units: Metre



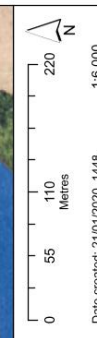
THE WEST COAST REGIONAL COUNCIL

The information displayed has been derived from the West Coast Regional Council's GIS database and maps. It is made available in good faith, but its accuracy or completeness is not guaranteed. Positions of property boundaries are INDICATIVE only and must not be used for legal purposes. Cadastral information sourced from Land Information New Zealand. Crown Copyright Reserved. This map is not to be reproduced without permission of WRCRC. © Copyright Reserved West Coast Regional Council.

FOUP052 - Okari Rd swamp (Decisions)



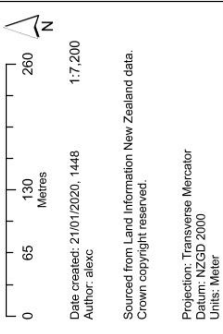
- Legend**
- Schedule 1
 - Schedule 2



Date created: 21/01/2020, 1448 1:6,000
Author: alexc

Sourced from Land Information New Zealand data. Crown copyright reserved.

Projection: Transverse Mercator
Datum: NZGD 2000
Units: Metre



Date created: 21/01/2020, 1448
 Author: alexc

Sourced from Land Information New Zealand data.
 Crown copyright reserved.

Projection: Transverse Mercator
 Datum: NZGD 2000
 Units: Metre

BULP050 - Oweka kahikatea forest (Decisions)

Legend

- Schedule 1
- Schedule 2

THE WEST COAST REGIONAL COUNCIL

The information displayed has been derived from the West Coast Regional Council's GIS database and maps. It is made available in good faith, but its accuracy or completeness is not guaranteed. Positions of property boundaries are INDICATIVE only and must not be used for legal purposes. Cadstral information sourced from Land Information New Zealand. Crown Copyright Reserved. This map is not to be reproduced without permission of WCRC.
 © Copyright Reserved West Coast Regional Council.



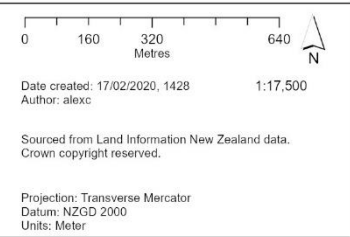
THE WEST COAST REGIONAL COUNCIL

The information displayed has been derived from the West Coast Regional Council's GIS database and maps. It is made available in good faith, but its accuracy or completeness is not guaranteed. Positions of property boundaries are INDICATIVE only and must not be used for legal purposes. Cadstral information sourced from Land Information New Zealand. Crown Copyright Reserved. This map is not to be reproduced without permission of WCRC.
 © Copyright Reserved West Coast Regional Council.

REEP057 - Johnnie Walker Creek Pakihi (Decisions)

Legend

- Schedule 1
- Schedule 2





0 150 300 600
Metres

Date created: 21/01/2020, 1448
Author: alexc

Sourced from Land Information New Zealand data.
Crown copyright reserved.

Projection: Transverse Mercator
Datum: NZGD 2000
Units: Metre

REEP060 - Palmers wetland (Decisions)



- Legend
- Schedule 1
 - Schedule 2

THE WEST COAST REGIONAL COUNCIL

The information displayed has been derived from the West Coast Regional Council's GIS database and maps. It is made available in good faith, but its accuracy or completeness is not guaranteed. Positions of property boundaries are INDICATIVE only and must not be used for legal purposes. Cadastral information sourced from Land Information New Zealand. Crown Copyright Reserved. This map is not to be reproduced without permission of WCRC. © Copyright Reserved West Coast Regional Council.



THE WEST COAST REGIONAL COUNCIL

The information displayed has been derived from the West Coast Regional Council's GIS database and maps. It is made available in good faith, but its accuracy or completeness is not guaranteed. Positions of property boundaries are INDICATIVE only and must not be used for legal purposes. Cadastral information sourced from Land Information New Zealand. Crown Copyright Reserved. This map is not to be reproduced without permission of WCRC. © Copyright Reserved West Coast Regional Council.

PUNP001 - Barrytown Flats, Maher Swamp (Decisions)



- Legend
- Schedule 1
 - Schedule 2

0 105 210 420
Metres

Date created: 17/02/2020, 1428
Author: alexc

Sourced from Land Information New Zealand data.
Crown copyright reserved.

Projection: Transverse Mercator
Datum: NZGD 2000
Units: Metre



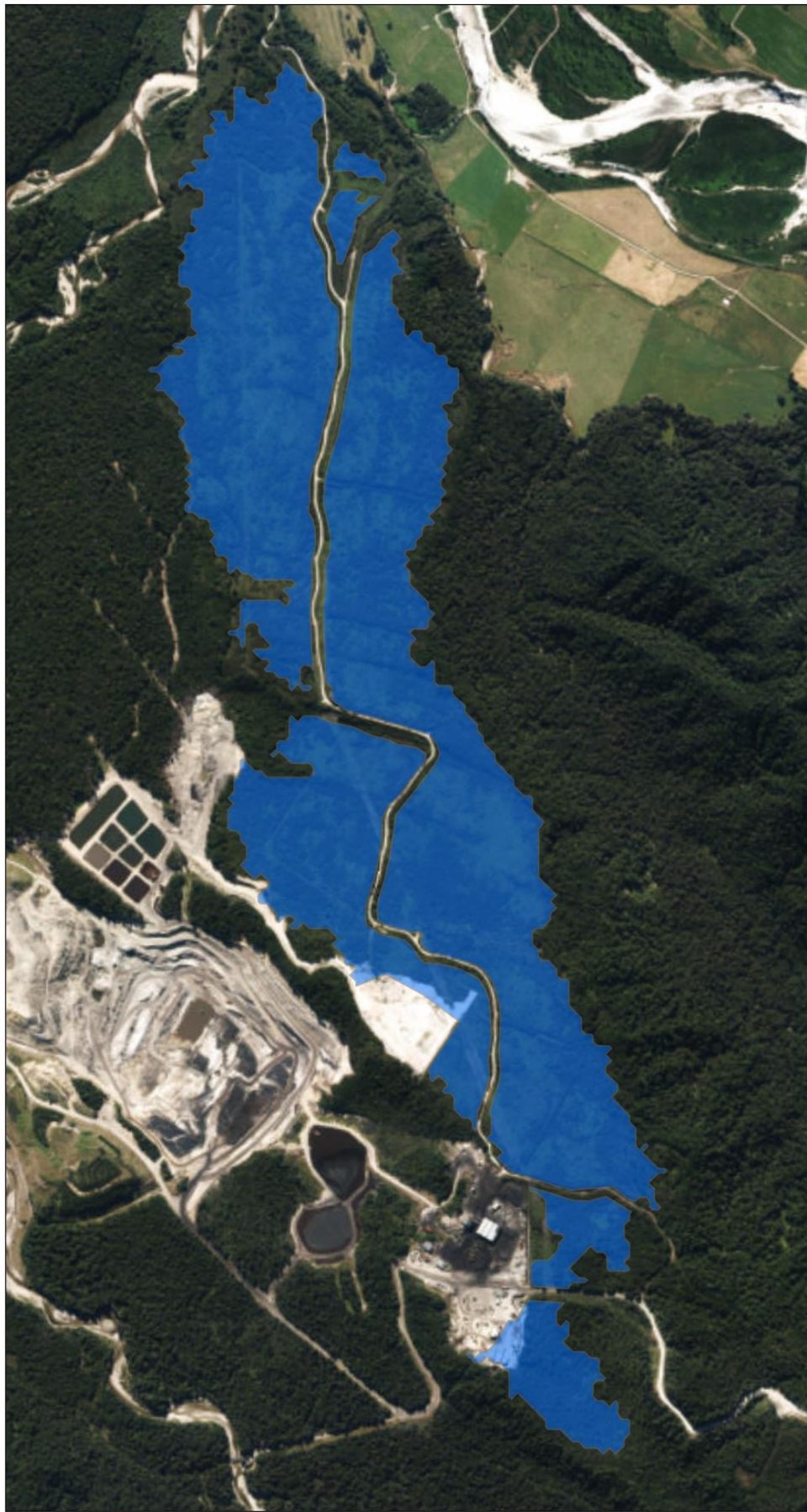
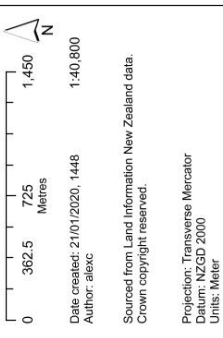
The information displayed has been derived from the West Coast Regional Council's GIS database and maps. It is made available in good faith, but its accuracy or completeness is not guaranteed. Positions of property boundaries are INDICATIVE only and must not be used for legal purposes. Cadastral information sourced from Land Information New Zealand. Crown Copyright Reserved. This map is not to be reproduced without permission of WRCRC.
© Copyright Reserved West Coast Regional Council.

MAIP003 - Fletcher Creek pakihi (Decisions)



Legend

- Schedule 1
- Schedule 2



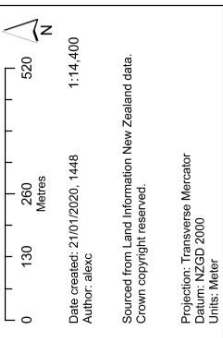
The information displayed has been derived from the West Coast Regional Council's GIS database and maps. It is made available in good faith, but its accuracy or completeness is not guaranteed. Positions of property boundaries are INDICATIVE only and must not be used for legal purposes. Cadastral information sourced from Land Information New Zealand. Crown Copyright Reserved. This map is not to be reproduced without permission of WRCRC.
© Copyright Reserved West Coast Regional Council.

MAIP004 - Giles Creek Pakihi (Decisions)



Legend

- Schedule 1
- Schedule 2





THE WEST COAST REGIONAL COUNCIL
 The information displayed has been derived from the West Coast Regional Council's GIS database and maps. It is made available in good faith, but its accuracy or completeness is not guaranteed. Positions of property boundaries are INDICATIVE only and must not be used for legal purposes. Cadastral information sourced from Land Information New Zealand, Crown Copyright Reserved. This map is not to be reproduced without permission of WRCRC.
 © Copyright Reserved West Coast Regional Council.

ROTP051 - Maruia peat bog (Decisions)



- Legend
- Schedule 1
 - Schedule 2

0 30 60 120
 Metres

Date created: 21/01/2020, 1448
 Author: alexc

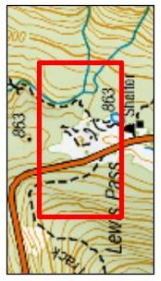
Sourced from Land Information New Zealand data.
 Crown copyright reserved.

Projection: Transverse Mercator
 Datum: NZGD 2000
 Units: Metre



THE WEST COAST REGIONAL COUNCIL
 The information displayed has been derived from the West Coast Regional Council's GIS database and maps. It is made available in good faith, but its accuracy or completeness is not guaranteed. Positions of property boundaries are INDICATIVE only and must not be used for legal purposes. Cadastral information sourced from Land Information New Zealand, Crown Copyright Reserved. This map is not to be reproduced without permission of WRCRC.
 © Copyright Reserved West Coast Regional Council.

ELLP002 - Lewis Pass Reserve bogs (Decisions)



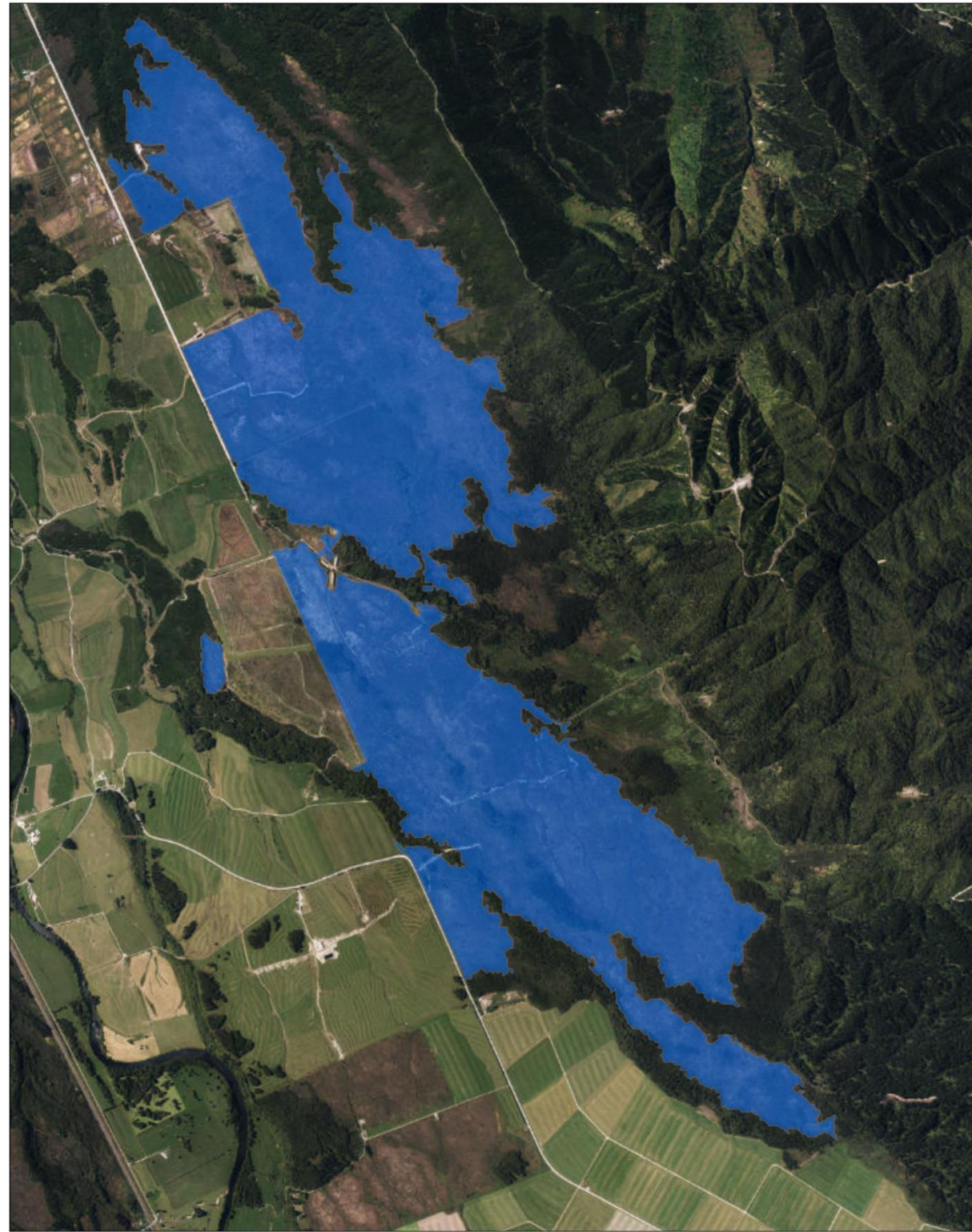
- Legend
- Schedule 1
 - Schedule 2

0 30 60 120
 Metres

Date created: 21/01/2020, 1448
 Author: alexc

Sourced from Land Information New Zealand data.
 Crown copyright reserved.

Projection: Transverse Mercator
 Datum: NZGD 2000
 Units: Metre



THE WEST COAST REGIONAL COUNCIL

The information displayed has been derived from the West Coast Regional Council's GIS database and maps. It is made available in good faith, but its accuracy or completeness is not guaranteed. Positions of property boundaries are INDICATIVE only and must not be used for legal purposes. Cadastral information sourced from Land Information New Zealand. Crown Copyright Reserved. This map is not to be reproduced without permission of WCRC. © Copyright Reserved West Coast Regional Council.

HOC004 - Candlelight Pakihi (Decisions)



- Legend**
- Schedule 1
 - Schedule 2

0 265 530 1,060
Metres

Date created: 08/05/2020, 1623 1:30,000
Author: alexc

Sourced from Land Information New Zealand data. Crown copyright reserved.

Projection: Transverse Mercator
Datum: NZGD 2000
Units: Meter



THE WEST COAST REGIONAL COUNCIL

The information displayed has been derived from the West Coast Regional Council's GIS database and maps. It is made available in good faith, but its accuracy or completeness is not guaranteed. Positions of property boundaries are INDICATIVE only and must not be used for legal purposes. Cadastral information sourced from Land Information New Zealand. Crown Copyright Reserved. This map is not to be reproduced without permission of WCRC. © Copyright Reserved West Coast Regional Council.

HOC005 - Lake Haupiri Southern Margin (Decisions)



- Legend**
- Schedule 1
 - Schedule 2

0 162.5 325 650
Metres

Date created: 21/01/2020, 1448 1:18,000
Author: alexc

Sourced from Land Information New Zealand data. Crown copyright reserved.

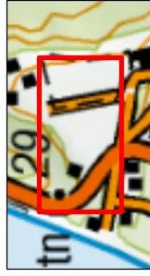
Projection: Transverse Mercator
Datum: NZGD 2000
Units: Meter



THE WEST COAST REGIONAL COUNCIL

The information displayed has been derived from the West Coast Regional Council's GIS database and maps. It is made available in good faith, but its accuracy or completeness is not guaranteed. Positions of property boundaries are INDICATIVE only and must not be used for legal purposes. Cadastral information sourced from Land Information New Zealand. Crown Copyright Reserved. This map is not to be reproduced without permission of WRCRC.
© Copyright Reserved West Coast Regional Council.

GREP050 - Rapahoe raupo swamp (Decisions)



Legend

- Schedule 1
- Schedule 2

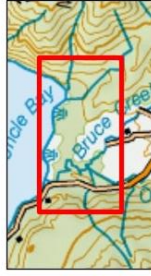
0 10 20 40 Metres
Date created: 21/01/2020, 1448
Author: alexc
1:1,200
Sourced from Land Information New Zealand data.
Crown copyright reserved.
Projection: Transverse Mercator
Datum: NZGD 2000
Units: Metre



THE WEST COAST REGIONAL COUNCIL

The information displayed has been derived from the West Coast Regional Council's GIS database and maps. It is made available in good faith, but its accuracy or completeness is not guaranteed. Positions of property boundaries are INDICATIVE only and must not be used for legal purposes. Cadastral information sourced from Land Information New Zealand. Crown Copyright Reserved. This map is not to be reproduced without permission of WRCRC.
© Copyright Reserved West Coast Regional Council.

BRUP001 - Orangipuku River Mouth (Decisions)



Legend

- Schedule 1
- Schedule 2

0 130 260 520 Metres
Date created: 21/01/2020, 1448
Author: alexc
1:14,400
Sourced from Land Information New Zealand data.
Crown copyright reserved.
Projection: Transverse Mercator
Datum: NZGD 2000
Units: Metre



THE WEST COAST REGIONAL COUNCIL

The information displayed has been derived from the West Coast Regional Council's GIS database and maps. It is made available in good faith, but its accuracy or completeness is not guaranteed. Positions of property boundaries are INDICATIVE only and must not be used for legal purposes. Cadastral information sourced from Land Information New Zealand. Crown Copyright Reserved. This map is not to be reproduced without permission of WRCRC.

© Copyright Reserved West Coast Regional Council.

BRUP003 - Lake Poerua swamp (Decisions)



- Legend
- Schedule 1
 - Schedule 2

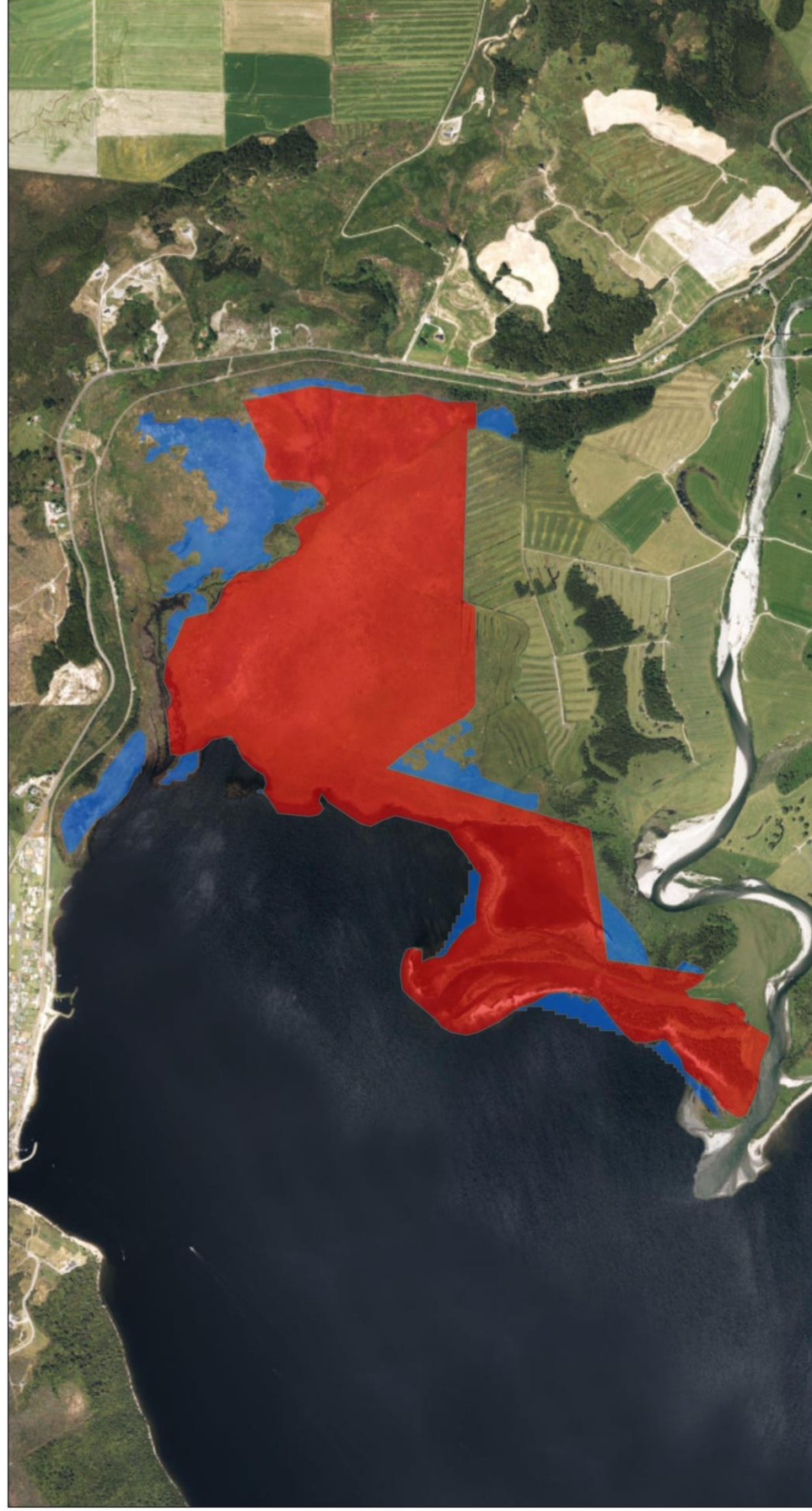
0 140 280 560 Metres

Date created: 21/01/2020, 1448
Author: alexc

1:15,600

Sourced from Land Information New Zealand data.
Crown copyright reserved.

Projection: Transverse Mercator
Datum: NZGD 2000
Units: Metre



THE WEST COAST REGIONAL COUNCIL

The information displayed has been derived from the West Coast Regional Council's GIS database and maps. It is made available in good faith, but its accuracy or completeness is not guaranteed. Positions of property boundaries are INDICATIVE only and must not be used for legal purposes. Cadastral information sourced from Land Information New Zealand. Crown Copyright Reserved. This map is not to be reproduced without permission of WRCRC.

© Copyright Reserved West Coast Regional Council.

BRUP006 - Lake Brunner, Te Kinga (Ruru) (Decisions)



- Legend
- Schedule 1
 - Schedule 2

0 195 390 780 Metres

Date created: 21/01/2020, 1448
Author: alexc

1:21,600

Sourced from Land Information New Zealand data.
Crown copyright reserved.

Projection: Transverse Mercator
Datum: NZGD 2000
Units: Metre



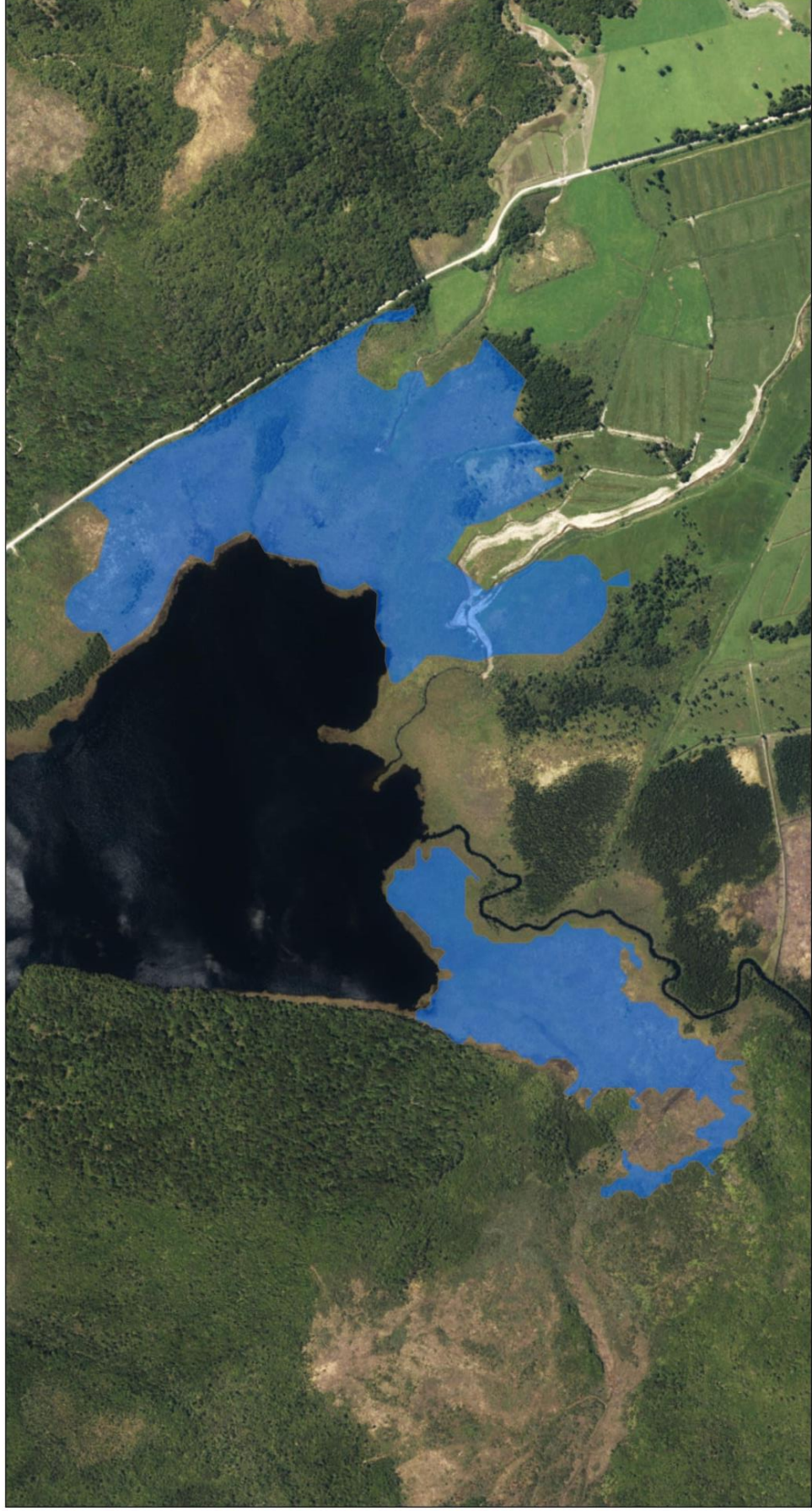
THE WEST COAST REGIONAL COUNCIL
 The information displayed has been derived from the West Coast Regional Council's GIS database and maps. It is made available in good faith, but its accuracy or completeness is not guaranteed. Positions of property boundaries are INDICATIVE only and must not be used for legal purposes. Cadastral information sourced from Land Information New Zealand. Crown Copyright Reserved. This map is not to be reproduced without permission of WRCRC.
 © Copyright Reserved West Coast Regional Council.

BRUP007 - Lake Brunner, Te Kinga (Iveagh Bay) (Decisions)



- Legend
- Schedule 1
 - Schedule 2

0 130 260 520 Metres
 Date created: 21/01/2020, 1448
 Author: alexc
 Sourced from Land Information New Zealand data. Crown copyright reserved.
 Projection: Transverse Mercator
 Datum: NZGD 2000
 Units: Metre



THE WEST COAST REGIONAL COUNCIL
 The information displayed has been derived from the West Coast Regional Council's GIS database and maps. It is made available in good faith, but its accuracy or completeness is not guaranteed. Positions of property boundaries are INDICATIVE only and must not be used for legal purposes. Cadastral information sourced from Land Information New Zealand. Crown Copyright Reserved. This map is not to be reproduced without permission of WRCRC.
 © Copyright Reserved West Coast Regional Council.

BRUP050 - Lady Lake wetland (Decisions)



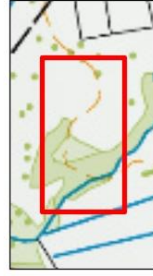
- Legend
- Schedule 1
 - Schedule 2

0 110 220 440 Metres
 Date created: 21/01/2020, 1448
 Author: alexc
 Sourced from Land Information New Zealand data. Crown copyright reserved.
 Projection: Transverse Mercator
 Datum: NZGD 2000
 Units: Metre



The information displayed has been derived from the West Coast Regional Council's GIS database and maps. It is made available in good faith, but its accuracy or completeness is not guaranteed. Positions of property boundaries are INDICATIVE only and must not be used for legal purposes. Cadastral information sourced from Land Information New Zealand. Crown Copyright Reserved. This map is not to be reproduced without permission of WRCRC.
© Copyright Reserved West Coast Regional Council.

BRUP052 - Rotomanu wetland (Decisions)



- Legend
- Schedule 1
 - Schedule 2

0 20 40 80
Metres

Date created: 21/01/2020, 1448
Author: alexc

Sourced from Land Information New Zealand data.
Crown copyright reserved.

Projection: Transverse Mercator
Datum: NZGD 2000
Units: Metre



The information displayed has been derived from the West Coast Regional Council's GIS database and maps. It is made available in good faith, but its accuracy or completeness is not guaranteed. Positions of property boundaries are INDICATIVE only and must not be used for legal purposes. Cadastral information sourced from Land Information New Zealand. Crown Copyright Reserved. This map is not to be reproduced without permission of WRCRC.
© Copyright Reserved West Coast Regional Council.

BRUP053 - Deep Creek pakihī (Decisions)



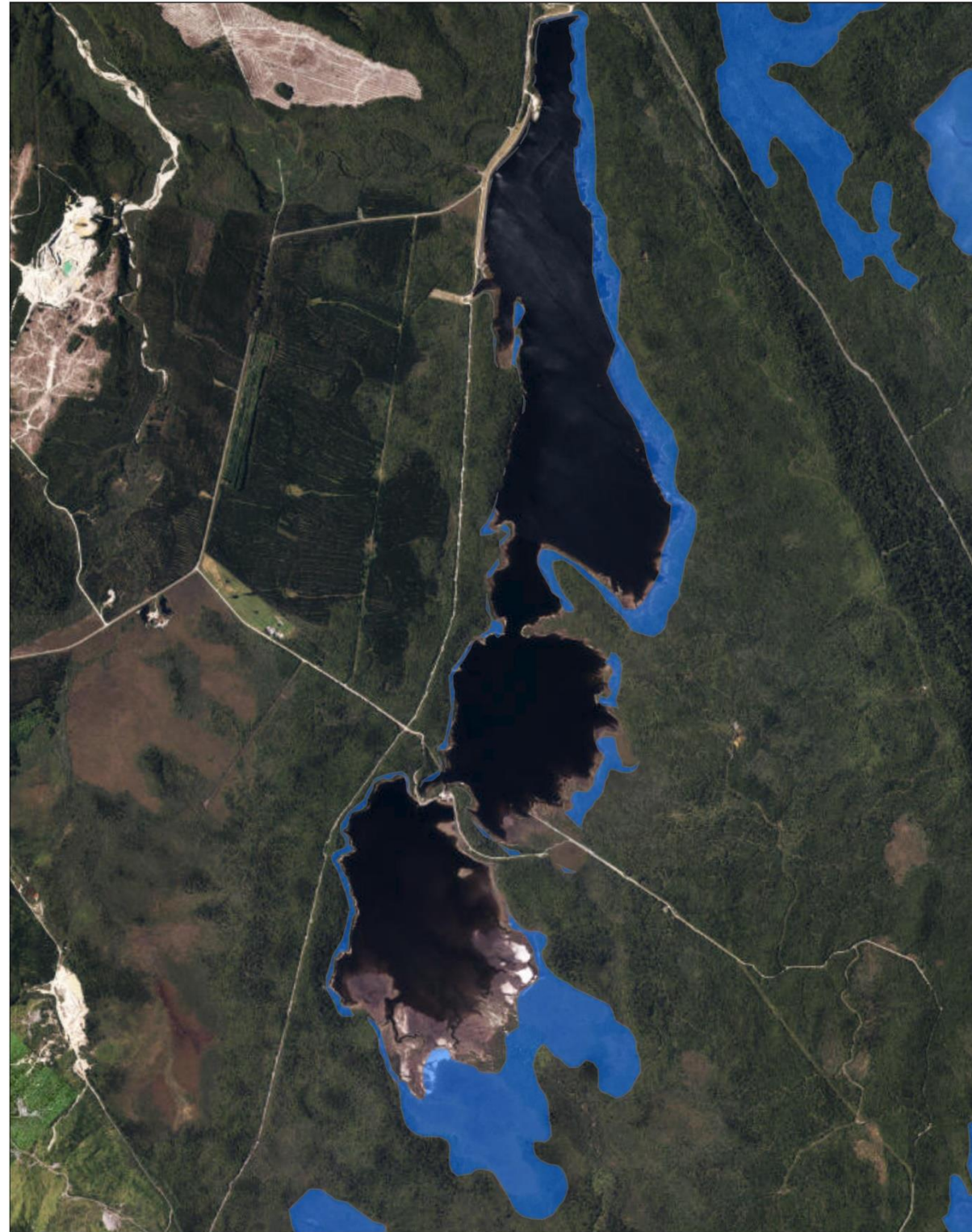
- Legend
- Schedule 1
 - Schedule 2

0 185 370 740
Metres

Date created: 21/01/2020, 1448
Author: alexc

Sourced from Land Information New Zealand data.
Crown copyright reserved.

Projection: Transverse Mercator
Datum: NZGD 2000
Units: Metre



THE WEST COAST REGIONAL COUNCIL

The information displayed has been derived from the West Coast Regional Council's GIS database and maps. It is made available in good faith, but its accuracy or completeness is not guaranteed. Positions of property boundaries are INDICATIVE only and must not be used for legal purposes. Cadastral information sourced from Land Information New Zealand. Crown Copyright Reserved. This map is not to be reproduced without permission of WRCRC. © Copyright Reserved West Coast Regional Council.

HOKP005 - Kapitea Reservoir and Associated Wetlands (Decisions)

Legend

- Schedule 1
- Schedule 2

0 250 500 1,000 Metres

Date created: 17/02/2020, 1428 1:28,000
Author: alexc

Sourced from Land Information New Zealand data. Crown copyright reserved.

Projection: Transverse Mercator
Datum: NZGD 2000
Units: Meter



THE WEST COAST REGIONAL COUNCIL

The information displayed has been derived from the West Coast Regional Council's GIS database and maps. It is made available in good faith, but its accuracy or completeness is not guaranteed. Positions of property boundaries are INDICATIVE only and must not be used for legal purposes. Cadastral information sourced from Land Information New Zealand. Crown Copyright Reserved. This map is not to be reproduced without permission of WRCRC. © Copyright Reserved West Coast Regional Council.

HOKP009 & HOKP064 - Totara Lagoon (Decisions)

Legend

- Schedule 1
- Schedule 2

0 365 730 1,460 Metres

Date created: 24/01/2020, 1553 1:40,985
Author: alexc

Sourced from Land Information New Zealand data. Crown copyright reserved.

Projection: Transverse Mercator
Datum: NZGD 2000
Units: Meter



THE WEST COAST REGIONAL COUNCIL
 The information displayed has been derived from the West Coast Regional Council's GIS database and maps. It is made available in good faith, but its accuracy or completeness is not guaranteed. Positions of property boundaries are INDICATIVE only and must not be used for legal purposes. Cadastral information sourced from Land Information New Zealand. Crown Copyright Reserved. This map is not to be reproduced without permission of WRCRC.
 © Copyright Reserved West Coast Regional Council.

HOKP018 - Whitley Creek Wetland (Decisions)



- Legend**
- Schedule 1
 - Schedule 2

0 320 640 1,280
 Metres

Date created: 21/01/2020, 1448
 Author: alexc

Sourced from Land Information New Zealand data.
 Crown copyright reserved.

Projection: Transverse Mercator
 Datum: NZGD 2000
 Units: Metre



THE WEST COAST REGIONAL COUNCIL
 The information displayed has been derived from the West Coast Regional Council's GIS database and maps. It is made available in good faith, but its accuracy or completeness is not guaranteed. Positions of property boundaries are INDICATIVE only and must not be used for legal purposes. Cadastral information sourced from Land Information New Zealand. Crown Copyright Reserved. This map is not to be reproduced without permission of WRCRC.
 © Copyright Reserved West Coast Regional Council.

HOKP020a - Mahinopua Creek and Lake Tarleton (Decisions)



- Legend**
- Schedule 1
 - Schedule 2

0 240 480 960
 Metres

Date created: 21/01/2020, 1448
 Author: alexc

Sourced from Land Information New Zealand data.
 Crown copyright reserved.

Projection: Transverse Mercator
 Datum: NZGD 2000
 Units: Metre



THE WEST COAST REGIONAL COUNCIL

The information displayed has been derived from the West Coast Regional Council's GIS database and maps. It is made available in good faith, but its accuracy or completeness is not guaranteed. Positions of property boundaries are INDICATIVE only and must not be used for legal purposes. Cadastral information sourced from Land Information New Zealand. Crown Copyright Reserved. This map is not to be reproduced without permission of WRCRC. © Copyright Reserved West Coast Regional Council.

HOKP020b - Mahinōpua Creek and Lake Tarleton (Decisions)



- Legend
- Schedule 1
 - Schedule 2

0 340 680 1,360 Metres

Date created: 21/01/2020, 1448
Author: alexc

Sourced from Land Information New Zealand data. Crown copyright reserved.

Projection: Transverse Mercator
Datum: NZGD 2000
Units: Metre



THE WEST COAST REGIONAL COUNCIL

The information displayed has been derived from the West Coast Regional Council's GIS database and maps. It is made available in good faith, but its accuracy or completeness is not guaranteed. Positions of property boundaries are INDICATIVE only and must not be used for legal purposes. Cadastral information sourced from Land Information New Zealand. Crown Copyright Reserved. This map is not to be reproduced without permission of WRCRC. © Copyright Reserved West Coast Regional Council.

HOKP020c - Mahinōpua Creek and Lake Tarleton (Decisions)



- Legend
- Schedule 1
 - Schedule 2

0 175 350 700 Metres

Date created: 21/01/2020, 1448
Author: alexc

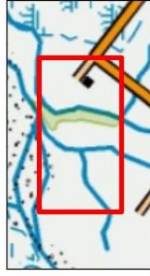
Sourced from Land Information New Zealand data. Crown copyright reserved.

Projection: Transverse Mercator
Datum: NZGD 2000
Units: Metre



The information displayed has been derived from the West Coast Regional Council's GIS database and maps. It is made available in good faith, but its accuracy or completeness is not guaranteed. Positions of property boundaries are INDICATIVE only and must not be used for legal purposes. Cadastral information sourced from Land Information New Zealand. Crown Copyright Reserved. This map is not to be reproduced without permission of WRCRC. © Copyright Reserved West Coast Regional Council.

HOKP078 - Wall Road (Decisions)



- Legend
- Schedule 1
 - Schedule 2

0 75 150 300
Metres

Date created: 21/01/2020, 1448
Author: alexc

Sourced from Land Information New Zealand data.
Crown copyright reserved.

Projection: Transverse Mercator
Datum: NZGD 2000
Units: Metre



The information displayed has been derived from the West Coast Regional Council's GIS database and maps. It is made available in good faith, but its accuracy or completeness is not guaranteed. Positions of property boundaries are INDICATIVE only and must not be used for legal purposes. Cadastral information sourced from Land Information New Zealand. Crown Copyright Reserved. This map is not to be reproduced without permission of WRCRC. © Copyright Reserved West Coast Regional Council.

HOKP079 - Cropp Road, Kowhiterangi (Decisions)



- Legend
- Schedule 1
 - Schedule 2

0 110 220 440
Metres

Date created: 21/01/2020, 1448
Author: alexc

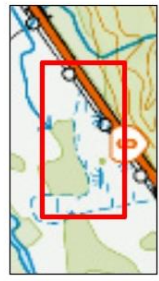
Sourced from Land Information New Zealand data.
Crown copyright reserved.

Projection: Transverse Mercator
Datum: NZGD 2000
Units: Metre



THE WEST COAST REGIONAL COUNCIL
 The information displayed has been derived from the West Coast Regional Council's GIS database and maps. It is made available in good faith, but its accuracy or completeness is not guaranteed. Positions of property boundaries are INDICATIVE only and must not be used for legal purposes. Cadastral information sourced from Land Information New Zealand. Crown Copyright Reserved. This map is not to be reproduced without permission of WRCRC.
 © Copyright Reserved West Coast Regional Council.

HOKP086 - Ross - wetland along SH6 just north of Mikonui bridge (Decisions)



- Legend
- Schedule 1
 - Schedule 2

0 20 40 80 Metres
 Date created: 21/01/2020, 1448
 Author: alexc
 1:2,400
 Sourced from Land Information New Zealand data. Crown copyright reserved.
 Projection: Transverse Mercator
 Datum: NZGD 2000
 Units: Metre



THE WEST COAST REGIONAL COUNCIL
 The information displayed has been derived from the West Coast Regional Council's GIS database and maps. It is made available in good faith, but its accuracy or completeness is not guaranteed. Positions of property boundaries are INDICATIVE only and must not be used for legal purposes. Cadastral information sourced from Land Information New Zealand. Crown Copyright Reserved. This map is not to be reproduced without permission of WRCRC.
 © Copyright Reserved West Coast Regional Council.

HOKP099 - Little Houhou Creek (Decisions)



- Legend
- Schedule 1
 - Schedule 2

0 87.5 175 350 Metres
 Date created: 21/01/2020, 1448
 Author: alexc
 1:9,600
 Sourced from Land Information New Zealand data. Crown copyright reserved.
 Projection: Transverse Mercator
 Datum: NZGD 2000
 Units: Metre



THE WEST COAST REGIONAL COUNCIL
 The information displayed has been derived from the West Coast Regional Council's GIS database and maps. It is made available in good faith, but its accuracy or completeness is not guaranteed. Positions of property boundaries are INDICATIVE only and must not be used for legal purposes. Cadastral information sourced from Land Information New Zealand. Crown Copyright Reserved. This map is not to be reproduced without permission of WRCRC.
 © Copyright Reserved West Coast Regional Council.

HOKP100 - Houhou Creek catchment wetland (Decisions)



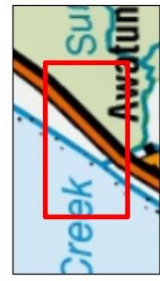
- Legend
- Schedule 1
 - Schedule 2

0 40 80 160 Metres
 Date created: 21/01/2020, 1448
 Author: alexc
 1:4,800
 Sourced from Land Information New Zealand data. Crown copyright reserved.
 Projection: Transverse Mercator
 Datum: NZGD 2000
 Units: Metre



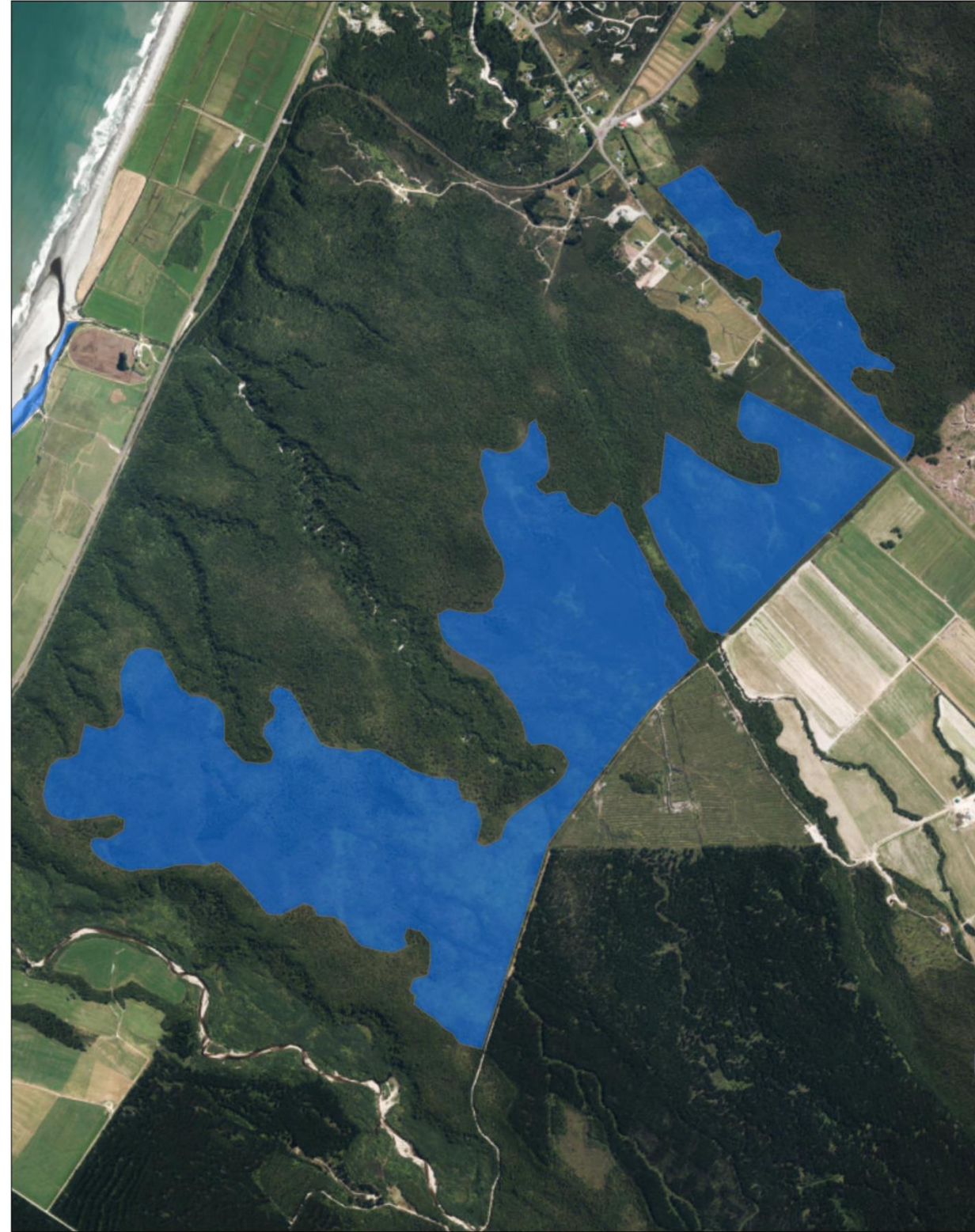
THE WEST COAST REGIONAL COUNCIL
 The information displayed has been derived from the West Coast Regional Council's GIS database and maps. It is made available in good faith, but its accuracy or completeness is not guaranteed. Positions of property boundaries are INDICATIVE only and must not be used for legal purposes. Cadastral information sourced from Land Information New Zealand. Crown Copyright Reserved. This map is not to be reproduced without permission of WRCRC.
 © Copyright Reserved West Coast Regional Council.

HOKP103 - Waimea Creek mouth and wetland (Decisions)



- Legend
- Schedule 1
 - Schedule 2

0 65 130 260 Metres
 Date created: 21/01/2020, 1448
 Author: alexc
 1:7,200
 Sourced from Land Information New Zealand data. Crown copyright reserved.
 Projection: Transverse Mercator
 Datum: NZGD 2000
 Units: Metre



THE WEST COAST REGIONAL COUNCIL

HOKP104 - Kapitea Creek (Decisions)

0 95 190 380 Metres

Date created: 17/02/2020, 1428 1:10,500
Author: alexc

Sourced from Land Information New Zealand data. Crown copyright reserved.

Projection: Transverse Mercator
Datum: NZGD 2000
Units: Meter

Legend

- Schedule 1
- Schedule 2

The information displayed has been derived from the West Coast Regional Council's GIS database and maps. It is made available in good faith, but its accuracy or completeness is not guaranteed. Positions of property boundaries are INDICATIVE only and must not be used for legal purposes. Cadastral information sourced from Land Information New Zealand. Crown Copyright Reserved. This map is not to be reproduced without permission of WCRC. © Copyright Reserved West Coast Regional Council.

THE WEST COAST REGIONAL COUNCIL

HOKP107 - Serpentine and Acre Creek Wetland (Decisions)

0 187.5 375 750 Metres

Date created: 17/02/2020, 1428 1:20,500
Author: alexc

Sourced from Land Information New Zealand data. Crown copyright reserved.

Projection: Transverse Mercator
Datum: NZGD 2000
Units: Meter

Legend

- Schedule 1
- Schedule 2

The information displayed has been derived from the West Coast Regional Council's GIS database and maps. It is made available in good faith, but its accuracy or completeness is not guaranteed. Positions of property boundaries are INDICATIVE only and must not be used for legal purposes. Cadastral information sourced from Land Information New Zealand. Crown Copyright Reserved. This map is not to be reproduced without permission of WCRC. © Copyright Reserved West Coast Regional Council.



The information displayed has been derived from the West Coast Regional Council's GIS database and maps. It is made available in good faith, but its accuracy or completeness is not guaranteed. Positions of property boundaries are INDICATIVE only and must not be used for legal purposes. Cadastral information sourced from Land Information New Zealand. Crown Copyright Reserved. This map is not to be reproduced without permission of WRCRC. © Copyright Reserved West Coast Regional Council.

HOKP119 - Lake Mudgie (Decisions)



- Legend
- Schedule 1
 - Schedule 2

0 195 390 780 Metres

Date created: 21/01/2020, 1448
Author: alexc

Sourced from Land Information New Zealand data.
Crown copyright reserved.

Projection: Transverse Mercator
Datum: NZGD 2000
Units: Metre



The information displayed has been derived from the West Coast Regional Council's GIS database and maps. It is made available in good faith, but its accuracy or completeness is not guaranteed. Positions of property boundaries are INDICATIVE only and must not be used for legal purposes. Cadastral information sourced from Land Information New Zealand. Crown Copyright Reserved. This map is not to be reproduced without permission of WRCRC. © Copyright Reserved West Coast Regional Council.

HARP001 - Mumu Creek Swamp (Decisions)



- Legend
- Schedule 1
 - Schedule 2

0 287.5 575 1,150 Metres

Date created: 21/01/2020, 1448
Author: alexc

Sourced from Land Information New Zealand data.
Crown copyright reserved.

Projection: Transverse Mercator
Datum: NZGD 2000
Units: Metre



THE WEST COAST REGIONAL COUNCIL

The information displayed has been derived from the West Coast Regional Council's GIS database and maps. It is made available in good faith, but its accuracy or completeness is not guaranteed. Positions of property boundaries are INDICATIVE only and must not be used for legal purposes. Cadastral information sourced from Land Information New Zealand. Crown Copyright Reserved. This map is not to be reproduced without permission of WRCRC. © Copyright Reserved West Coast Regional Council.

HARP004 - Pye Creek Swamp (Decisions)



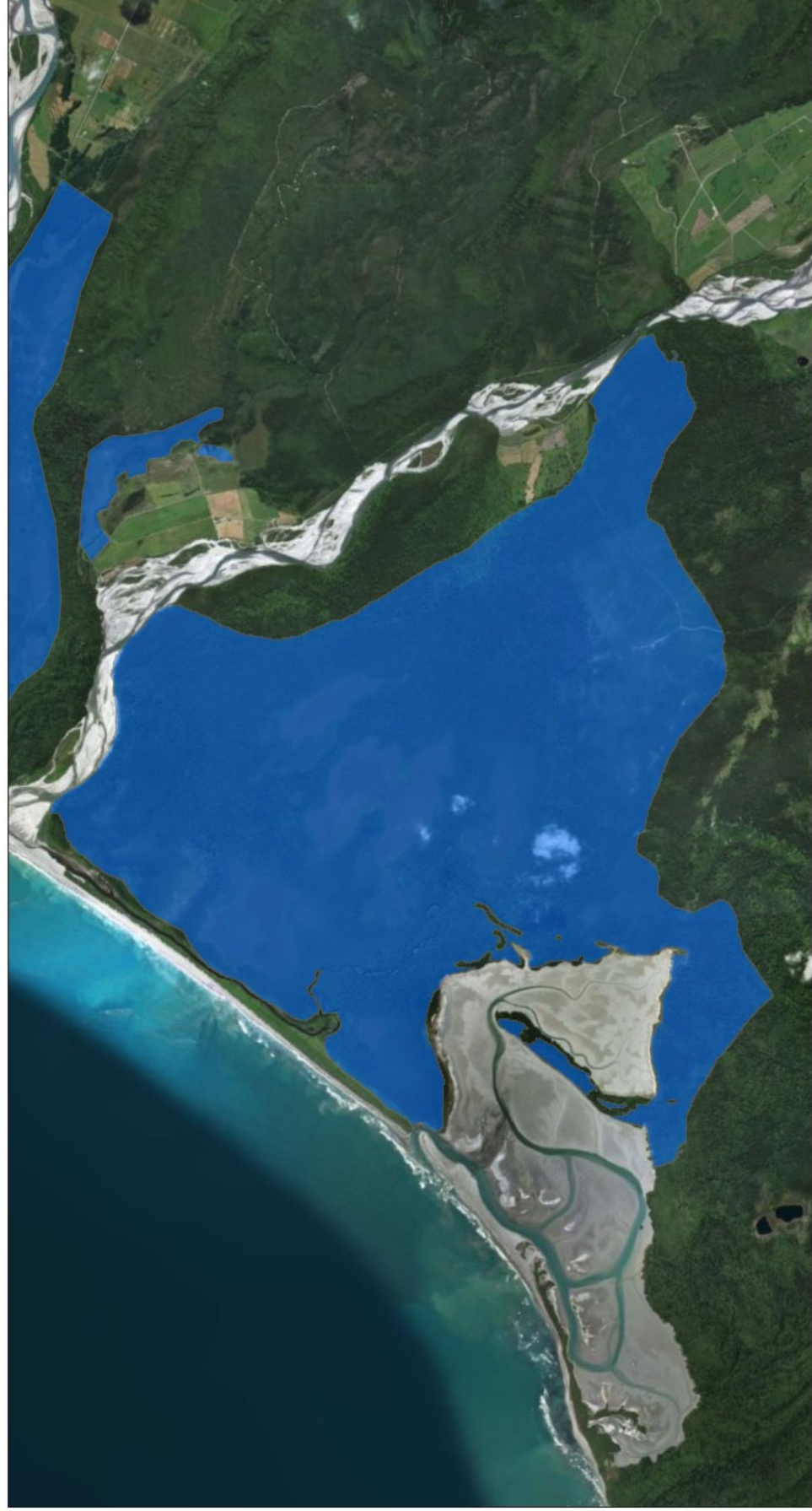
- Legend
- Schedule 1
 - Schedule 2

0 120 240 480
Metres

Date created: 21/01/2020, 1448
Author: alexc

Sourced from Land Information New Zealand data.
Crown copyright reserved.

Projection: Transverse Mercator
Datum: NZGD 2000
Units: Metre



THE WEST COAST REGIONAL COUNCIL

The information displayed has been derived from the West Coast Regional Council's GIS database and maps. It is made available in good faith, but its accuracy or completeness is not guaranteed. Positions of property boundaries are INDICATIVE only and must not be used for legal purposes. Cadastral information sourced from Land Information New Zealand. Crown Copyright Reserved. This map is not to be reproduced without permission of WRCRC. © Copyright Reserved West Coast Regional Council.

HARP005 - Saltwater Ecological Area (Decisions)



- Legend
- Schedule 1
 - Schedule 2

0 500 1,000 2,000
Metres

Date created: 21/01/2020, 1448
Author: alexc

Sourced from Land Information New Zealand data.
Crown copyright reserved.

Projection: Transverse Mercator
Datum: NZGD 2000
Units: Metre



THE WEST COAST REGIONAL COUNCIL
 The information displayed has been derived from the West Coast Regional Council's GIS database and maps. It is made available in good faith, but its accuracy or completeness is not guaranteed. Positions of property boundaries are INDICATIVE only and must not be used for legal purposes. Cadastral information sourced from Land Information New Zealand. Crown Copyright Reserved. This map is not to be reproduced without permission of WRCRC.
 © Copyright Reserved West Coast Regional Council.

HARP006 - Kakapotahi Swamp (Decisions)



- Legend**
- Schedule 1
 - Schedule 2

0 385 770 1,540
 Metres
 Date created: 21/01/2020, 1448
 Author: alexc
 Sourced from Land Information New Zealand data.
 Crown copyright reserved.
 Projection: Transverse Mercator
 Datum: NZGD 2000
 Units: Metre



THE WEST COAST REGIONAL COUNCIL
 The information displayed has been derived from the West Coast Regional Council's GIS database and maps. It is made available in good faith, but its accuracy or completeness is not guaranteed. Positions of property boundaries are INDICATIVE only and must not be used for legal purposes. Cadastral information sourced from Land Information New Zealand. Crown Copyright Reserved. This map is not to be reproduced without permission of WRCRC.
 © Copyright Reserved West Coast Regional Council.

HARP017 - White Heron Lagoon & Rotokino Swamps (Decisions)



- Legend**
- Schedule 1
 - Schedule 2

0 415 830 1,660
 Metres
 Date created: 21/01/2020, 1448
 Author: alexc
 Sourced from Land Information New Zealand data.
 Crown copyright reserved.
 Projection: Transverse Mercator
 Datum: NZGD 2000
 Units: Metre



THE WEST COAST REGIONAL COUNCIL

The information displayed has been derived from the West Coast Regional Council's GIS database and maps. It is made available in good faith, but its accuracy or completeness is not guaranteed. Positions of property boundaries are INDICATIVE only and must not be used for legal purposes. Cadastral information sourced from Land Information New Zealand. Crown Copyright Reserved. This map is not to be reproduced without permission of WRCRC. © Copyright Reserved West Coast Regional Council.

HARPO21 - Lake Ianthe wetland (Decisions)



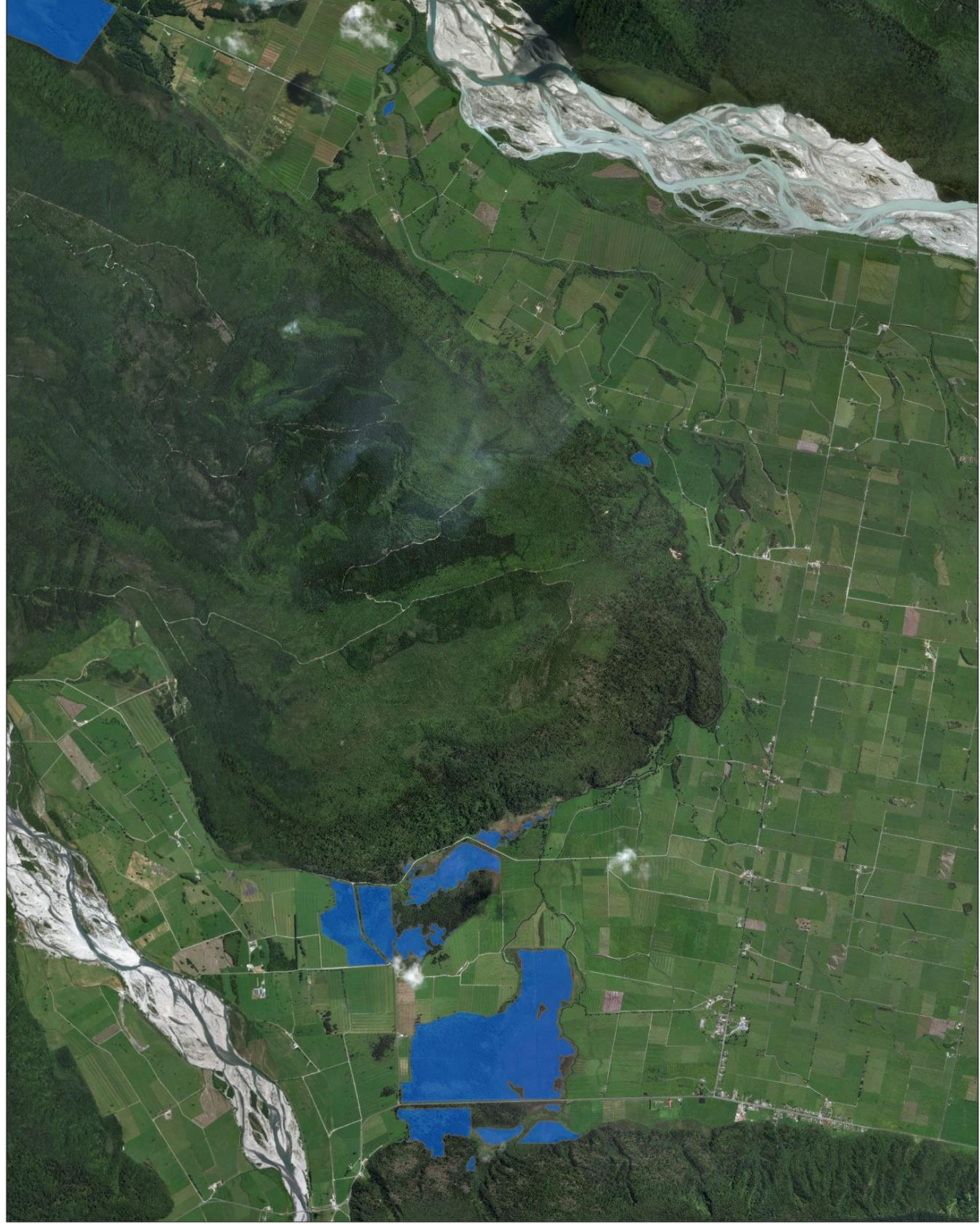
- Legend
- Schedule 1
 - Schedule 2

0 205 410 820 Metres

Date created: 21/01/2020, 1448
Author: alexc

Sourced from Land Information New Zealand data. Crown copyright reserved.

Projection: Transverse Mercator
Datum: NZGD 2000
Units: Metre



THE WEST COAST REGIONAL COUNCIL

The information displayed has been derived from the West Coast Regional Council's GIS database and maps. It is made available in good faith, but its accuracy or completeness is not guaranteed. Positions of property boundaries are INDICATIVE only and must not be used for legal purposes. Cadastral information sourced from Land Information New Zealand. Crown Copyright Reserved. This map is not to be reproduced without permission of WRCRC. © Copyright Reserved West Coast Regional Council.

HARPO23 - La Fontaine Stream (Decisions)



- Legend
- Schedule 1
 - Schedule 2

0 460 920 1,840 Metres

Date created: 24/01/2020, 1553
Author: alexc

Sourced from Land Information New Zealand data. Crown copyright reserved.

Projection: Transverse Mercator
Datum: NZGD 2000
Units: Metre



0 240 480 960
Metres
1:26,400

Date created: 21/01/2020, 1448
Author: alexc

Sourced from Land Information New Zealand data.
Crown copyright reserved.

Projection: Transverse Mercator
Datum: NZGD 2000
Units: Meter

HARPO24 - Ianteha Mudfish Habitat (Decisions)



- Legend
- Schedule 1
 - Schedule 2

THE WEST COAST REGIONAL COUNCIL

The information displayed has been derived from the West Coast Regional Council's GIS database and maps. It is made available in good faith, but its accuracy or completeness is not guaranteed. Positions of property boundaries are INDICATIVE only and must not be used for legal purposes. Cadastral information sourced from Land Information New Zealand. Crown Copyright Reserved. This map is not to be reproduced without permission of WRCRC. © Copyright Reserved West Coast Regional Council.



THE WEST COAST REGIONAL COUNCIL

The information displayed has been derived from the West Coast Regional Council's GIS database and maps. It is made available in good faith, but its accuracy or completeness is not guaranteed. Positions of property boundaries are INDICATIVE only and must not be used for legal purposes. Cadastral information sourced from Land Information New Zealand. Crown Copyright Reserved. This map is not to be reproduced without permission of WRCRC. © Copyright Reserved West Coast Regional Council.

KAGP004 - Heretaniwha (Decisions)



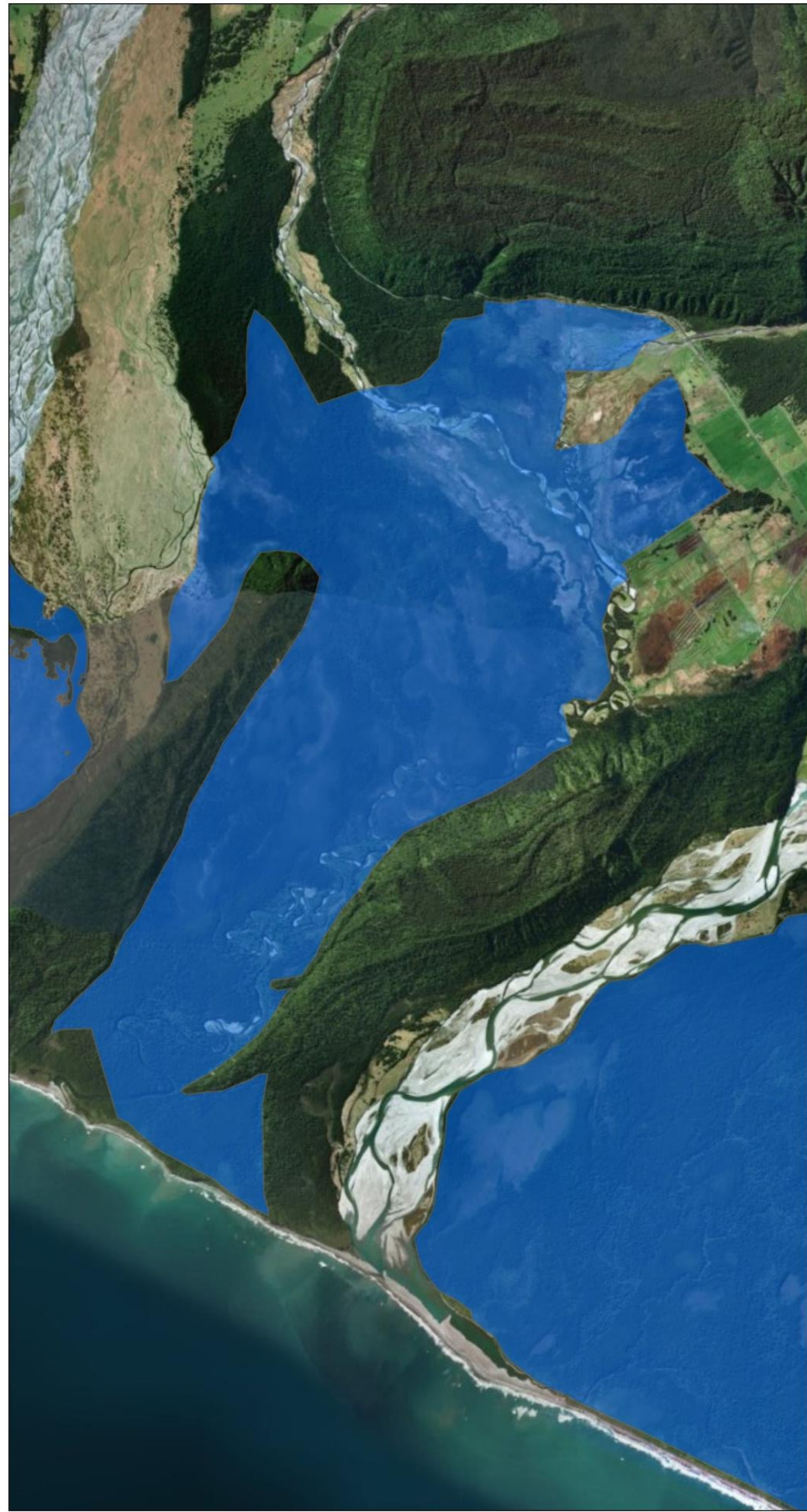
- Legend
- Schedule 1
 - Schedule 2

0 500 1,000 2,000
Metres
1:62,206

Date created: 24/01/2020, 1553
Author: alexc

Sourced from Land Information New Zealand data.
Crown copyright reserved.

Projection: Transverse Mercator
Datum: NZGD 2000
Units: Meter



THE WEST COAST REGIONAL COUNCIL

The information displayed has been derived from the West Coast Regional Council's GIS database and maps. It is made available in good faith, but its accuracy or completeness is not guaranteed. Positions of property boundaries are INDICATIVE only and must not be used for legal purposes. Cadastral information sourced from Land Information New Zealand. Crown Copyright Reserved. This map is not to be reproduced without permission of WCRC.
 © Copyright Reserved West Coast Regional Council.

KAGP014 - Ohinetamatea Swamp (Decisions)



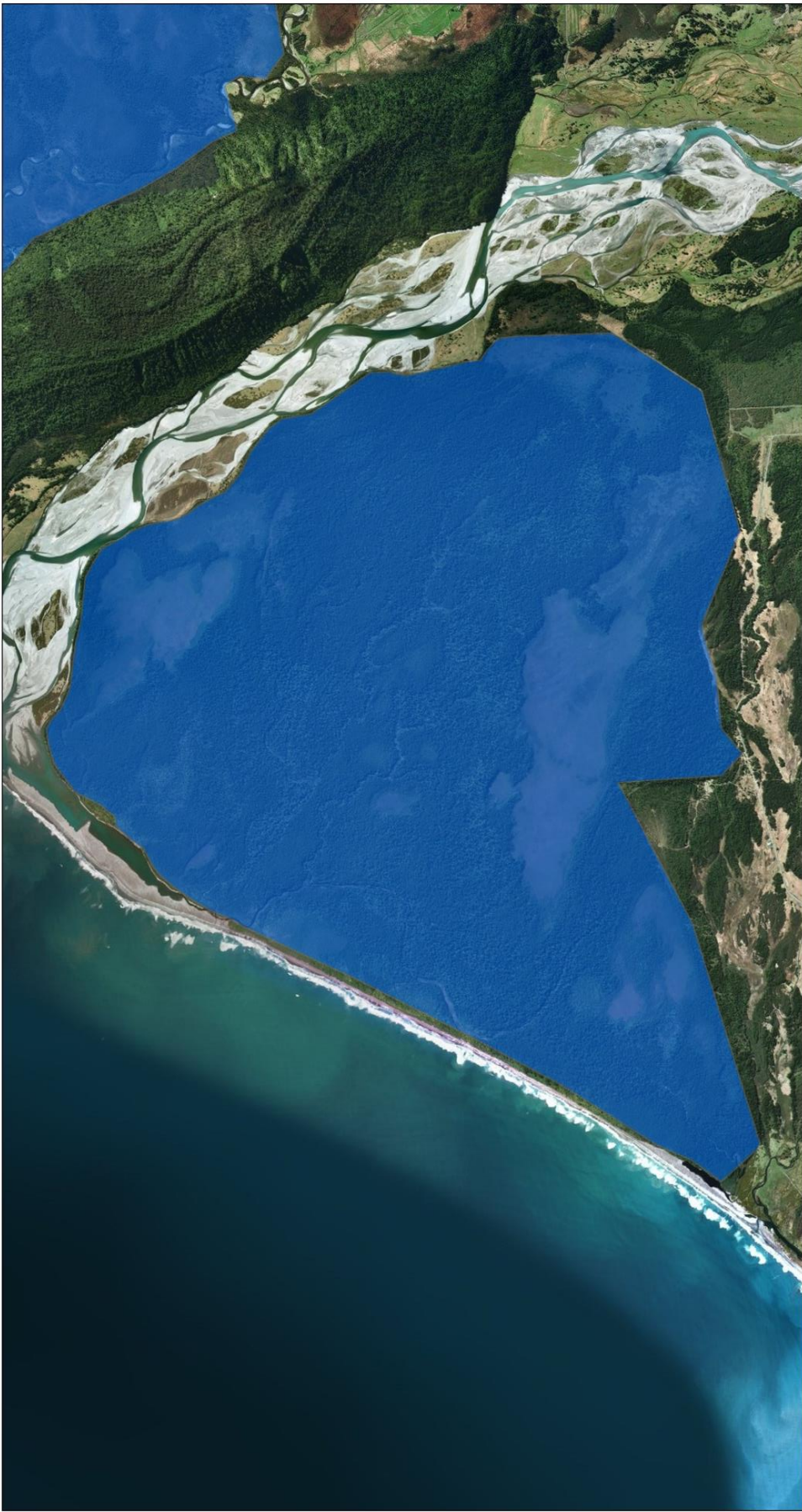
- Legend
- Schedule 1
 - Schedule 2

0 500 1,000 2,000 Metres

Date created: 21/01/2020, 1448
 Author: alexc

Sourced from Land Information New Zealand data.
 Crown copyright reserved.

Projection: Transverse Mercator
 Datum: NZGD 2000
 Units: Metre



THE WEST COAST REGIONAL COUNCIL

The information displayed has been derived from the West Coast Regional Council's GIS database and maps. It is made available in good faith, but its accuracy or completeness is not guaranteed. Positions of property boundaries are INDICATIVE only and must not be used for legal purposes. Cadastral information sourced from Land Information New Zealand. Crown Copyright Reserved. This map is not to be reproduced without permission of WCRC.
 © Copyright Reserved West Coast Regional Council.

KAGP018 - Hunts Beach State Forest (Decisions)



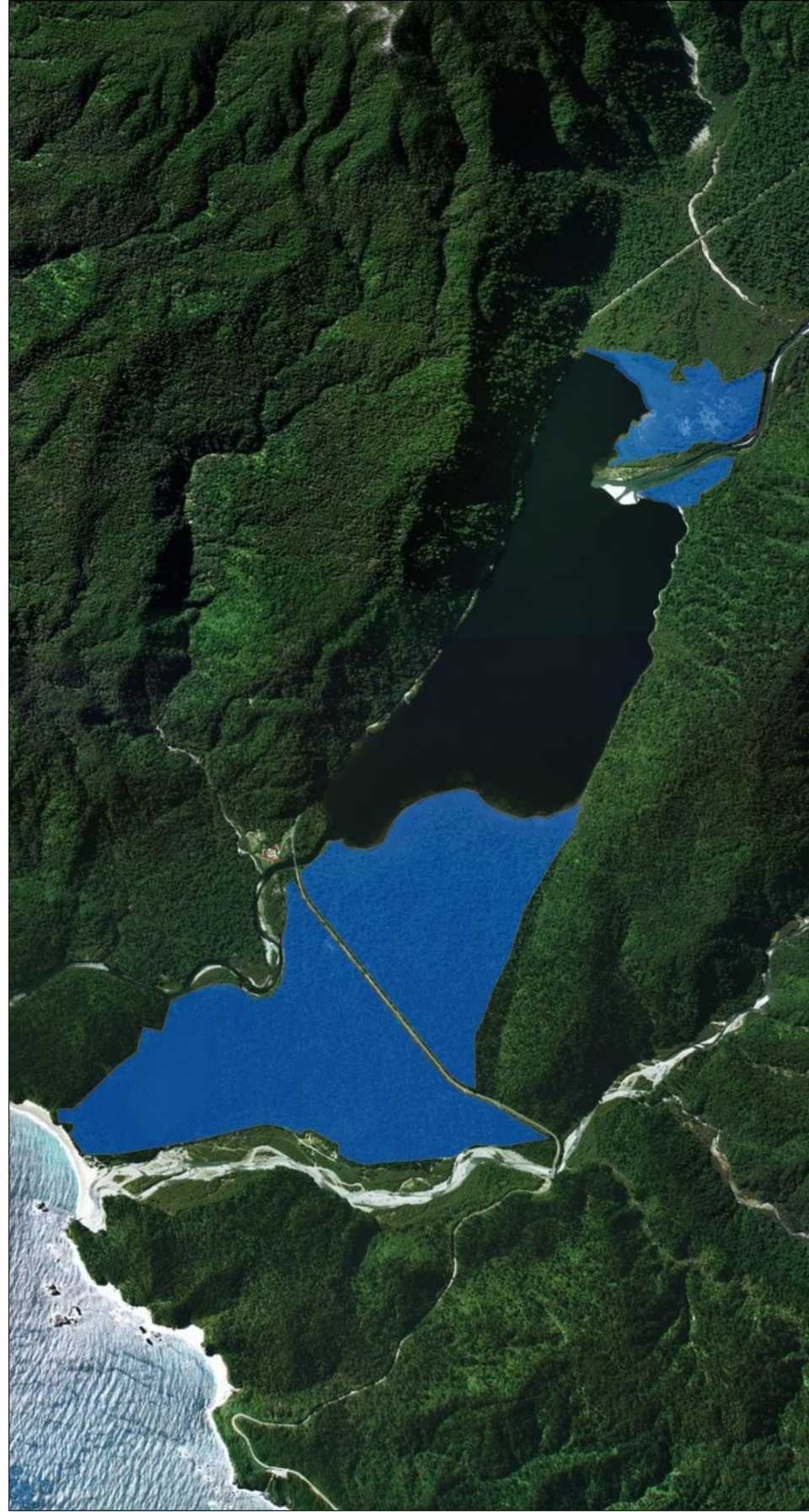
- Legend
- Schedule 1
 - Schedule 2

0 460 920 1,840 Metres

Date created: 21/01/2020, 1448
 Author: alexc

Sourced from Land Information New Zealand data.
 Crown copyright reserved.

Projection: Transverse Mercator
 Datum: NZGD 2000
 Units: Metre



THE WEST COAST REGIONAL COUNCIL
 The information displayed has been derived from the West Coast Regional Council's GIS database and maps. It is made available in good faith, but its accuracy or completeness is not guaranteed. Positions of property boundaries are INDICATIVE only and must not be used for legal purposes. Cadastral information sourced from Land Information New Zealand. Crown Copyright Reserved. This map is not to be reproduced without permission of WCRC. © Copyright Reserved West Coast Regional Council.

PARP052 - Lake Moeraki wetlands (Decisions)



- Legend
- Schedule 1
 - Schedule 2

0 287.5 575 1,150
 Metres
 Date created: 21/01/2020, 1448
 Author: alexc
 Sourced from Land Information New Zealand data.
 Crown copyright reserved.
 Projection: Transverse Mercator
 Datum: NZGD 2000
 Units: Meter



THE WEST COAST REGIONAL COUNCIL
 The information displayed has been derived from the West Coast Regional Council's GIS database and maps. It is made available in good faith, but its accuracy or completeness is not guaranteed. Positions of property boundaries are INDICATIVE only and must not be used for legal purposes. Cadastral information sourced from Land Information New Zealand. Crown Copyright Reserved. This map is not to be reproduced without permission of WCRC. © Copyright Reserved West Coast Regional Council.

HAAP002 - Okuru Turnbull (Decisions)



- Legend
- Schedule 1
 - Schedule 2

0 155 310 620
 Metres
 Date created: 17/02/2020, 1428
 Author: alexc
 Sourced from Land Information New Zealand data.
 Crown copyright reserved.
 Projection: Transverse Mercator
 Datum: NZGD 2000
 Units: Meter



THE WEST COAST REGIONAL COUNCIL

The information displayed has been derived from the West Coast Regional Council's GIS database and maps. It is made available in good faith, but its accuracy or completeness is not guaranteed. Positions of property boundaries are INDICATIVE only and must not be used for legal purposes. Cadastral information sourced from Land Information New Zealand. Crown Copyright Reserved. This map is not to be reproduced without permission of WRCRC. © Copyright Reserved West Coast Regional Council.

HAAP009 - Okuru Estuary (Decisions)



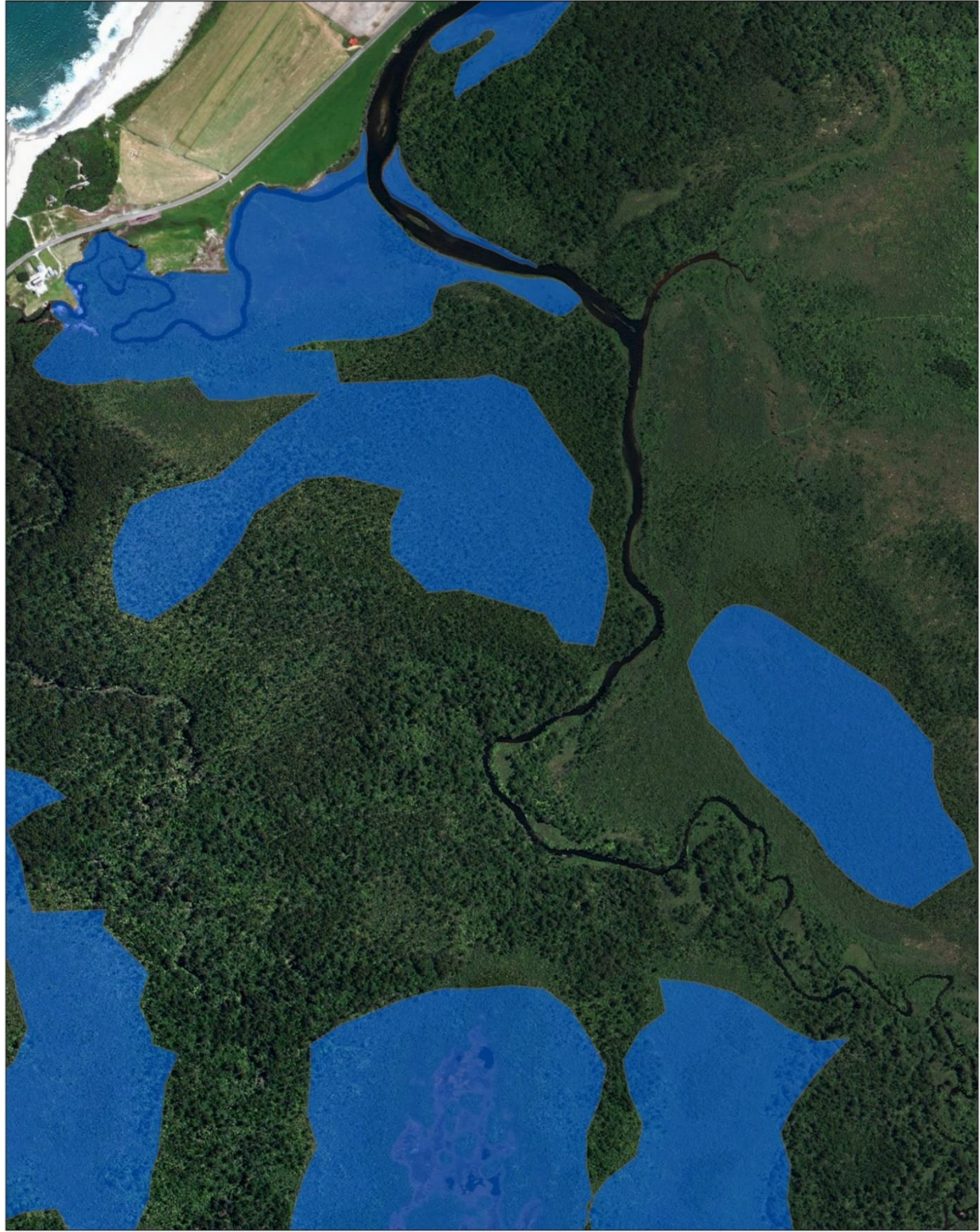
- Legend
- Schedule 1
 - Schedule 2

0 87.5 175 350 Metres

Date created: 21/01/2020, 1448
Author: alexc

Sourced from Land Information New Zealand data.
Crown copyright reserved.

Projection: Transverse Mercator
Datum: NZGD 2000
Units: Meter



THE WEST COAST REGIONAL COUNCIL

The information displayed has been derived from the West Coast Regional Council's GIS database and maps. It is made available in good faith, but its accuracy or completeness is not guaranteed. Positions of property boundaries are INDICATIVE only and must not be used for legal purposes. Cadastral information sourced from Land Information New Zealand. Crown Copyright Reserved. This map is not to be reproduced without permission of WRCRC. © Copyright Reserved West Coast Regional Council.

HAAP012 - Turnbull Waitoto (Decisions)



- Legend
- Schedule 1
 - Schedule 2

0 110 220 440 Metres

Date created: 24/01/2020, 1553
Author: alexc

Sourced from Land Information New Zealand data.
Crown copyright reserved.

Projection: Transverse Mercator
Datum: NZGD 2000
Units: Meter



THE WEST COAST REGIONAL COUNCIL

The information displayed has been derived from the West Coast Regional Council's GIS database and maps. It is made available in good faith, but its accuracy or completeness is not guaranteed. Positions of property boundaries are INDICATIVE only and must not be used for legal purposes. Cadastral information sourced from Land Information New Zealand. Crown Copyright Reserved. This map is not to be reproduced without permission of WRCRC.
© Copyright Reserved West Coast Regional Council.

HAAP012 - Turnbull Waiatoto 4 (Decisions)

Legend

- Schedule 1
- Schedule 2

0 62.5 125 250 Metres

Date created: 24/01/2020, 1553 1:7,000
Author: alexc

Sourced from Land Information New Zealand data. Crown copyright reserved.

Projection: Transverse Mercator
Datum: NZGD 2000
Units: Meter



THE WEST COAST REGIONAL COUNCIL

The information displayed has been derived from the West Coast Regional Council's GIS database and maps. It is made available in good faith, but its accuracy or completeness is not guaranteed. Positions of property boundaries are INDICATIVE only and must not be used for legal purposes. Cadastral information sourced from Land Information New Zealand. Crown Copyright Reserved. This map is not to be reproduced without permission of WRCRC.
© Copyright Reserved West Coast Regional Council.

KAGP008B - Lake Kiri Pakihi and adjacent wetlands (Environment Court resolution)

Legend

- Schedule 1
- Schedule 2

0 225 450 900 Metres

Date created: 05/07/2021, 1101 1:25,000
Author: alexc

Sourced from Land Information New Zealand data. Crown copyright reserved.

Projection: Transverse Mercator
Datum: NZGD 2000
Units: Meter



**THE WEST COAST
REGIONAL COUNCIL**

The information displayed has been derived from the West Coast Regional Council's GIS database and maps. It is made available in good faith, but its accuracy is not guaranteed. The information is not intended to be used for legal purposes. Cadastral information sourced from Land Information New Zealand. Crown Copyright Reserved. This map is not to be reproduced without permission of WCRC.
© Copyright Reserved West Coast Regional Council.

KAGP008b - Lake Kani Pakihi and adjacent wetlands (Environment Court resolution)



- Legend
- Schedule 1
 - Schedule 2

0 362.5 725 1,450
Metres

Date created: 05/07/2021, 11:01
Author: alexc

Sourced from Land Information New Zealand data.
Crown copyright reserved.

Projection: Transverse Mercator
Datum: NZGD 2000
Units: Meter